



COMPACT BOOSTER Electric Water Heaters

C Series

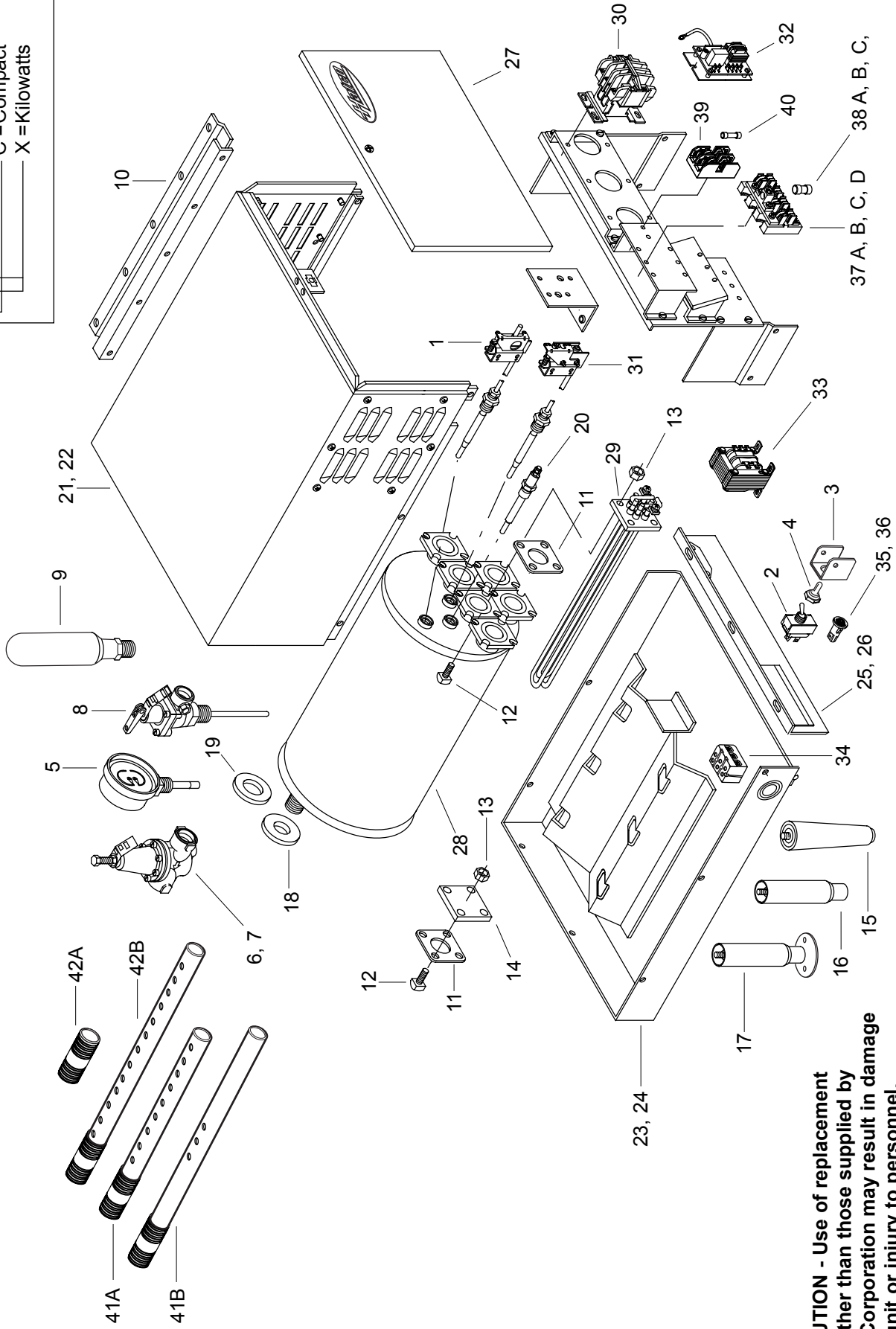
<i>C-4</i>	<i>C-13</i>	<i>C-30</i>
<i>C-5</i>	<i>C-15</i>	<i>C-36</i>
<i>C-6</i>	<i>C-17</i>	<i>C-39</i>
<i>C-7</i>	<i>C-18</i>	<i>C-45</i>
<i>C-9</i>	<i>C-24</i>	<i>C-54</i>
<i>C-12</i>	<i>C-27</i>	<i>C-58</i>

**REPLACEMENT
PARTS LIST**

HATCO COMPACT ELECTRIC BOOSTER HEATER C SERIES 4KW-58KW

Model Designation

C-XX
 C = Compact
 X = Kilowatts



CAUTION - Use of replacement parts other than those supplied by Hatco Corporation may result in damage to the unit or injury to personnel.

**PARTS COMMON TO ALL
COMPACT BOOSTER MODELS
4KW-58KW**

ITEM	DESCRIPTION	PART NO.	QTY.
1	High Limit, Thermostat	02.16.116.00	1
2	On/Off Toggle Switch	R02.19.008A.00	1
3	Guard, Toggle Switch	04.01.038.00	1
4	Toggle Switch Boot, Rubber	02.20.040.00	1
5	Temperature/Pressure Gauge	03.01.003.00	2
6	Pressure Reducing Valve, Iron	03.02.004.00	1
7	Pressure Reducing Valve, Brass (Optional)	03.02.015.00	1
8	Temperature/Pressure Relief Valve	03.02.022.00	1
9	Shock Absorber (Optional)	03.40.057.00	1
10	Booster Slide Bracket Set	R04.20.030.00	1
11	Gasket, Heating Element	02.11.012.00	1-6
12	Bolt, Element Mounting	05.04.022.00	4-24
13	Nut, Element Mounting	05.04.028.00	4-24
14	Blank Element Flange with Gasket and Hardware	R02.11.013.00	1
15	Leg, Plastic	05.30.069.00*	4
16	Leg, S.S. (Optional)	05.30.070.00*	4
17	Deck Mount Legs, S.S. (Optional)	05.30.073.00*	4
18	Ring Seal, In/Out Pipe	05.06.006.00	2
19	Ring Seal, Relief Valve	05.06.017.00	1
20	Probe, Low Water Cut Off	02.40.001.00	1

* 4-18KW units manufactured with serial number 1021059907 or lower use part number 05.30.008.00 for the plastic leg, 04.01.013.00 for the S.S. leg and 04.01.014.00 for the S.S. deck mount leg. 24-58KW units manufactured with serial number 1017179907 or lower use part number 05.30.008.00 for the plastic leg, 4.01.013.00 for the S.S. leg and 04.01.014.00 for the S.S. deck mount leg.

NOTE: S.S. is an abbreviation for stainless steel.

**COMPACT BOOSTER
SHEET METAL BODY PARTS**

ITEM	DESCRIPTION	4KW-18KW	24KW-58KW
21	Jacket, Painted	R04.01.032.00	R04.01.220.00
22	Jacket, S.S. (Optional)	R04.01.034.00	R04.01.254.00
23	Base, Painted	R04.01.020P.00	R04.01.201P.00
24	Base, S.S. (Optional)	R04.01.022.00	R04.01.251.00
25	Base, Front, Painted	R04.01.033.00	R04.01.233.00
26	Base, Front, S.S. (Optional)	R04.01.035.00	R04.01.255.00
27	Front Cover, S.S.	R04.01.036.00	R04.01.221.00

NOTE: Part numbers listed for sheet metal body parts apply only to units manufactured during or after October 1996. Consult factory with model and serial number for units manufactured before October 1996.

PARTS SPECIFIC TO MODEL C-4

ITEM	DESCRIPTION	208V		240V		480V		208V		240V		480V		208V		240V	
		Single Phase	Three Phase	Single Phase	Three Phase	Single Phase	Three Phase	Single Phase	Three Phase	Single Phase	Three Phase	Single Phase	Three Phase	Single Phase	Three Phase	Single Phase	Three Phase
28	Tank with Gaskets	R01.02.002.00	R01.02.003.00	R01.02.002.00	R01.02.003.00	R01.02.002.00									R01.02.002.00		
29	Heating Element with Gasket Quantity	R02.04.400.00	R02.04.400.00	R02.04.401.00	R02.04.401.00	R02.04.404.00									R02.04.400.00		
30	Contactor Quantity	1	3	1	3	1								1			
31	Thermostat Control	02.01.010.00	02.01.015.00	02.01.010.00	02.01.015.00	02.01.015.00									02.01.008.00		
32	Low Water Cut Off Board	1	1	1	1	1								1			
33	Transformer, Step Down	02.16.024.00	02.16.024.00	02.16.024.00	02.16.024.00	02.16.024.00									02.16.024.00		
34	Terminal Block	02.01.006.00	02.01.006.00	02.01.006.00	02.01.006.00	02.01.006.00									02.01.001.00		
35	Indicator Light, Red	02.17.004.00	02.17.004.00	02.17.004.00	02.17.004.00	02.17.005.00											
36	Indicator Light, Green	R02.15.045.00	R02.15.046.00	R02.15.045.00	R02.15.046.00												
37A	Power Fuse Block Quantity	02.19.154.00	02.19.154.00	02.19.154.00	02.19.154.00	02.19.154.00									R02.15.045.00		
37B	Power Fuse Block Quantity														02.19.151.00		
37C	Power Fuse Block Quantity														02.19.150.00		
37D	Power Fuse Block Quantity																
38A	Power Fuse (2 Pack) Quantity																
38B	Power Fuse (2 Pack) Quantity																
38C	Power Fuse (2 Pack) Quantity																
39	Control Fuse Block	02.03.022.00	02.03.022.00	02.03.022.00	02.03.022.00	02.03.023.00									02.03.004.00		
40	Control Fuse (2 Pack)	R02.03.014.02	R02.03.014.02	R02.03.014.02	R02.03.014.02	R02.03.013.02									R02.03.001.02		
41A	Tube, Inlet Water	03.30.004.00	03.30.004.00	03.30.004.00	03.30.004.00	03.30.004.00									03.30.004.00		
41B	Tube, Inlet Water																
42A	Nipple, Outlet Water	03.11.008.00	03.11.008.00	03.11.008.00	03.11.008.00	03.11.008.00									03.11.008.00		
42B	Tube, Outlet Water																
	Electrical Diagram	HC1-2451	HS1-1541	HC1-2451	HS1-1541	HC1-2451									HC1-392		

Shaded area reflects export models only.

PARTS SPECIFIC TO MODEL C-4

ITEM	DESCRIPTION	240V Three Phase	380V Three Phase	415V Three Phase	480V Three Phase	600V Three Phase	380-400V CE 3 Wire	400-415V CE 3 Wire	380-400V CE 4 Wire	400-415V CE 4 Wire
28	Tank with Gaskets	---	---	---	---	---	---	---	---	---
29	Heating Element with Gasket Quantity	---	---	---	---	---	---	---	---	---
30	Contactors Quantity	---	---	---	---	---	---	---	---	---
31	Thermostat Control	---	---	---	---	---	---	---	---	---
32	Low Water Cut Off Board	---	---	---	---	---	---	---	---	---
33	Transformer, Step Down	---	---	---	---	---	---	---	---	---
34	Terminal Block	---	---	---	---	---	---	---	---	---
35	Indicator Light, Red	---	---	---	---	---	---	---	---	---
36	Indicator Light, Green	---	---	---	---	---	---	---	---	---
37A	Power Fuse Block Quantity	---	---	---	---	---	---	---	---	---
37B	Power Fuse Block Quantity	---	---	---	---	---	---	---	---	---
37C	Power Fuse Block Quantity	---	---	---	---	---	---	---	---	---
37D	Power Fuse Block Quantity	---	---	---	---	---	---	---	---	---
38A	Power Fuse (2 Pack) Quantity	---	---	---	---	---	---	---	---	---
38B	Power Fuse (2 Pack) Quantity	---	---	---	---	---	---	---	---	---
38C	Power Fuse (2 Pack) Quantity	---	---	---	---	---	---	---	---	---
39	Control Fuse Block	---	---	---	---	---	---	---	---	---
40	Control Fuse (2 Pack)	---	---	---	---	---	---	---	---	---
41A	Tube, Inlet Water	---	---	---	---	---	---	---	---	---
41B	Tube, Inlet Water	---	---	---	---	---	---	---	---	---
42A	Nipple, Outlet Water	---	---	---	---	---	---	---	---	---
42B	Tube, Outlet Water	---	---	---	---	---	---	---	---	---
	Electrical Diagram	---	---	---	---	---	---	---	---	---

Shaded area reflects export models only.

PARTS SPECIFIC TO MODEL C-5

ITEM	DESCRIPTION	208V		240V		480V		208V		240V		480V		208V		240V	
		Single Phase	Three Phase	Single Phase	Three Phase	Single Phase	Three Phase	Single Phase	Three Phase	Single Phase	Three Phase	Single Phase	Three Phase	Single Phase	Three Phase	Single Phase	Three Phase
28	Tank with Gaskets	R01.02.002.00	R01.02.003.00	R01.02.002.00	R01.02.003.00	R01.02.002.00									R01.02.002.00		
29	Heating Element with Gasket Quantity	R02.04.500.00 1	R02.04.500.00 3	R02.04.501.00 1	R02.04.501.00 3	R02.04.502.00 1									R02.04.500.00 1		
30	Contactor Quantity	02.01.010.00 1	02.01.015.00 1	02.01.010.00 1	02.01.015.00 1	02.01.015.00 1									02.01.008.00 1		
31	Thermostat Control	02.16.024.00	02.16.024.00	02.16.024.00	02.16.024.00	02.16.024.00									02.16.024.00		
32	Low Water Cut Off Board	02.01.006.00	02.01.006.00	02.01.006.00	02.01.006.00	02.01.006.00									02.01.001.00		
33	Transformer, Step Down	02.17.004.00	02.17.004.00	02.17.004.00	02.17.004.00	02.17.005.00											
34	Terminal Block	R02.15.045.00	R02.15.046.00	R02.15.045.00	R02.15.046.00										R02.15.045.00		
35	Indicator Light, Red	02.19.154.00	02.19.154.00	02.19.154.00	02.19.154.00	02.19.154.00									02.19.151.00		
36	Indicator Light, Green														02.19.150.00		
37A	Power Fuse Block Quantity																
37B	Power Fuse Block Quantity																
37C	Power Fuse Block Quantity																
37D	Power Fuse Block Quantity																
38A	Power Fuse (2 Pack) Quantity																
38B	Power Fuse (2 Pack) Quantity																
38C	Power Fuse (2 Pack) Quantity																
39	Control Fuse Block	02.03.022.00	02.03.022.00	02.03.022.00	02.03.022.00	02.03.023.00									02.03.004.00		
40	Control Fuse (2 Pack)	R02.03.014.02	R02.03.014.02	R02.03.014.02	R02.03.014.02	R02.03.013.02									R02.03.001.02		
41A	Tube, Inlet Water	03.30.004.00	03.30.004.00	03.30.004.00	03.30.004.00	03.30.004.00									03.30.004.00		
41B	Tube, Inlet Water																
42A	Nipple, Outlet Water	03.11.008.00	03.11.008.00	03.11.008.00	03.11.008.00	03.11.008.00									03.11.008.00		
42B	Tube, Outlet Water																
	Electrical Diagram	HC1-2451	HS1-1541	HC1-2451	HS1-1541	HC1-2451									HC1-392		

Shaded area reflects **export models only**.

PARTS SPECIFIC TO MODEL C-5

ITEM	DESCRIPTION	240V Three Phase	380V Three Phase	415V Three Phase	480V Three Phase	600V Three Phase	380-400V CE 3 Wire	400-415V CE 3 Wire	380-400V CE 4 Wire	400-415V CE 4 Wire
28	Tank with Gaskets	---	---	---	---	---	---	---	---	---
29	Heating Element with Gasket Quantity	---	---	---	---	---	---	---	---	---
30	Contactors Quantity	---	---	---	---	---	---	---	---	---
31	Thermostat Control	---	---	---	---	---	---	---	---	---
32	Low Water Cut Off Board	---	---	---	---	---	---	---	---	---
33	Transformer, Step Down	---	---	---	---	---	---	---	---	---
34	Terminal Block	---	---	---	---	---	---	---	---	---
35	Indicator Light, Red	---	---	---	---	---	---	---	---	---
36	Indicator Light, Green	---	---	---	---	---	---	---	---	---
37A	Power Fuse Block Quantity	---	---	---	---	---	---	---	---	---
37B	Power Fuse Block Quantity	---	---	---	---	---	---	---	---	---
37C	Power Fuse Block Quantity	---	---	---	---	---	---	---	---	---
37D	Power Fuse Block Quantity	---	---	---	---	---	---	---	---	---
38A	Power Fuse (2 Pack) Quantity	---	---	---	---	---	---	---	---	---
38B	Power Fuse (2 Pack) Quantity	---	---	---	---	---	---	---	---	---
38C	Power Fuse (2 Pack) Quantity	---	---	---	---	---	---	---	---	---
39	Control Fuse Block	---	---	---	---	---	---	---	---	---
40	Control Fuse (2 Pack)	---	---	---	---	---	---	---	---	---
41A	Tube, Inlet Water	---	---	---	---	---	---	---	---	---
41B	Tube, Inlet Water	---	---	---	---	---	---	---	---	---
42A	Nipple, Outlet Water	---	---	---	---	---	---	---	---	---
42B	Tube, Outlet Water	---	---	---	---	---	---	---	---	---
	Electrical Diagram	---	---	---	---	---	---	---	---	---

Shaded area reflects export models only.

PARTS SPECIFIC TO MODEL C-6

ITEM	DESCRIPTION	208V		240V		480V		208V		240V		480V		208V		240V	
		Single Phase	Three Phase	Single Phase	Three Phase	Single Phase	Three Phase	Single Phase	Three Phase	Single Phase	Three Phase	Single Phase	Three Phase	Single Phase	Three Phase	Single Phase	Three Phase
28	Tank with Gaskets	R01.02.002.00	R01.02.002.00	R01.02.002.00	R01.02.002.00	---	---	---	---	---	---	---	---	---	R01.02.002.00	R01.02.002.00	R01.02.002.00
29	Heating Element with Gasket Quantity	R02.04.302.00	R02.04.302.00	R02.04.303.00	R02.04.303.00	---	---	---	---	---	---	---	---	---	R02.04.302.00	R02.04.302.00	R02.04.303.00
30	Contactor Quantity	2	2	2	2	---	---	---	---	---	---	---	---	---	2	2	2
31	Thermostat Control	02.01.015.00	02.01.015.00	02.01.015.00	02.01.015.00	---	---	---	---	---	---	---	---	---	02.01.015.00	02.01.016.00	02.01.016.00
32	Low Water Cut Off Board	1	1	1	1	---	---	---	---	---	---	---	---	---	1	1	1
33	Transformer, Step Down	02.16.024.00	02.16.024.00	02.16.024.00	02.16.024.00	---	---	---	---	---	---	---	---	---	02.16.024.00	02.16.024.00	02.16.024.00
34	Terminal Block	02.01.006.00	02.01.006.00	02.01.006.00	02.01.006.00	---	---	---	---	---	---	---	---	---	02.01.006.00	02.01.001.00	02.01.001.00
35	Indicator Light, Red	02.17.004.00	02.17.004.00	02.17.004.00	02.17.004.00	---	---	---	---	---	---	---	---	---	02.17.005.00	---	---
36	Indicator Light, Green	R02.15.046.00	R02.15.046.00	R02.15.046.00	R02.15.046.00	---	---	---	---	---	---	---	---	---	---	---	---
37A	Power Fuse Block Quantity	02.19.154.00	02.19.154.00	02.19.154.00	02.19.154.00	---	---	---	---	---	---	---	---	---	02.19.154.00	02.19.151.00	02.19.151.00
37B	Power Fuse Block Quantity	---	---	---	---	---	---	---	---	---	---	---	---	---	---	02.19.150.00	02.19.150.00
37C	Power Fuse Block Quantity	---	---	---	---	---	---	---	---	---	---	---	---	---	---	---	---
37D	Power Fuse Block Quantity	---	---	---	---	---	---	---	---	---	---	---	---	---	---	---	---
38A	Power Fuse (2 Pack) Quantity	---	---	---	---	---	---	---	---	---	---	---	---	---	---	---	---
38B	Power Fuse (2 Pack) Quantity	---	---	---	---	---	---	---	---	---	---	---	---	---	---	---	---
38C	Power Fuse (2 Pack) Quantity	---	---	---	---	---	---	---	---	---	---	---	---	---	---	---	---
39	Control Fuse Block	02.03.022.00	02.03.022.00	02.03.022.00	02.03.022.00	---	---	---	---	---	---	---	---	---	02.03.023.00	02.03.004.00	02.03.004.00
40	Control Fuse (2 Pack)	R02.03.014.02	R02.03.014.02	R02.03.014.02	R02.03.014.02	---	---	---	---	---	---	---	---	---	R02.03.013.02	R02.03.001.02	R02.03.001.02
41A	Tube, Inlet Water	03.30.004.00	03.30.004.00	03.30.004.00	03.30.004.00	---	---	---	---	---	---	---	---	---	03.30.004.00	03.30.004.00	03.30.004.00
41B	Tube, Inlet Water	---	---	---	---	---	---	---	---	---	---	---	---	---	---	---	---
42A	Nipple, Outlet Water	03.11.008.00	03.11.008.00	03.11.008.00	03.11.008.00	---	---	---	---	---	---	---	---	---	03.11.008.00	03.11.008.00	03.11.008.00
42B	Tube, Outlet Water	---	---	---	---	---	---	---	---	---	---	---	---	---	---	---	---
	Electrical Diagram	HC1-2455	HC1-2455	HC1-2455	HC1-2455	---	---	---	---	---	---	---	---	---	HC1-391	HC1-391	HC1-391

Shaded area reflects export models only.

PARTS SPECIFIC TO MODEL C-6

ITEM	DESCRIPTION	240V Three Phase	380V Three Phase	415V Three Phase	480V Three Phase	600V Three Phase	380-400V CE 3 Wire	400-415V CE 3 Wire	380-400V CE 4 Wire	400-415V CE 4 Wire
28	Tank with Gaskets	R01.02.002.00	R01.02.003.00	R01.02.003.00	R01.02.002.00	R01.02.003.00	R01.02.003.00	R01.02.003.00	R01.02.003.00	R01.02.003.00
29	Heating Element with Gasket Quantity	R02.04.303.00 2	R02.04.510.00 3	R02.04.452.00 3	R02.04.305.00 2	R02.04.404.00 3	R02.04.202.00 3	R02.04.202.00 3	R02.04.202.00 3	R02.04.202.00 3
30	Contactor Quantity	02.01.016.00 1	02.01.016.00 1	02.01.016.00 1	02.01.016.00 1	02.01.016.00 1	02.01.016.00 2	02.01.016.00 2	02.01.016.00 2	02.01.016.00 2
31	Thermostat Control	02.16.024.00	02.16.024.00	02.16.024.00	02.16.024.00	02.16.024.00	02.16.024.00	02.01.024.00	02.16.024.00	02.16.024.00
32	Low Water Cut Off Board	02.01.001.00	02.01.001.00	02.01.001.00	02.01.001.00	02.01.001.00	02.01.164.00	02.01.164.00	02.01.164.00	02.01.164.00
33	Transformer, Step Down	---	R02.17.003.00	R02.17.002.00	R02.17.002.00	02.17.009.00	02.17.043.00	02.17.043.00	---	---
34	Terminal Block	R02.15.046.00	---	---	---	---	R02.15.035.00	R02.15.035.00	02.15.044.00	02.15.044.00
35	Indicator Light, Red	02.19.151.00	02.19.151.00	02.19.151.00	02.19.151.00	02.19.151.00	---	---	---	---
36	Indicator Light, Green	02.19.150.00	02.19.150.00	02.19.150.00	02.19.150.00	02.19.150.00	02.19.150.00	02.19.150.00	02.19.150.00	02.19.150.00
37A	Power Fuse Block Quantity	---	---	---	---	---	---	---	---	---
37B	Power Fuse Block Quantity	---	---	---	---	---	---	---	---	---
37C	Power Fuse Block Quantity	---	---	---	---	---	---	---	---	---
37D	Power Fuse Block Quantity	---	---	---	---	---	---	---	---	---
38A	Power Fuse (2 Pack) Quantity	---	---	---	---	---	---	---	---	---
38B	Power Fuse (2 Pack) Quantity	---	---	---	---	---	---	---	---	---
38C	Power Fuse (2 Pack) Quantity	---	---	---	---	---	---	---	---	---
39	Control Fuse Block	02.03.004.00	---	---	---	---	---	---	---	---
40	Control Fuse (2 Pack)	R02.03.001.02	R02.03.005.02	R02.03.005.02	R02.03.005.02	R02.03.021.02	---	---	---	---
41A	Tube, Inlet Water	03.30.004.00	03.30.004.00	03.30.004.00	03.30.004.00	03.30.004.00	03.30.004.00	03.30.004.00	03.30.004.00	03.30.004.00
41B	Tube, Inlet Water	---	---	---	---	---	---	---	---	---
42A	Nipple, Outlet Water	03.11.008.00	03.11.008.00	03.11.008.00	03.11.008.00	03.11.008.00	03.11.008.00	03.11.008.00	03.11.008.00	03.11.008.00
42B	Tube, Outlet Water	---	---	---	---	---	---	---	---	---
	Electrical Diagram	HC1-391	HC1-396	HC1-396	HC1-397	HC1-396	HS1-4931	HS1-4931	HS1-4718	HS1-4718

Shaded area reflects export models only.

PARTS SPECIFIC TO MODEL C-7

ITEM	DESCRIPTION	208V		240V		480V		208V		240V		480V		208V		240V	
		Single Phase	Three Phase	Single Phase	Three Phase	Single Phase	Three Phase	Single Phase	Three Phase	Single Phase	Three Phase	Single Phase	Three Phase	Single Phase	Three Phase	Single Phase	Three Phase
28	Tank with Gaskets	R01.02.002.00	R01.02.002.00	R01.02.002.00	R01.02.002.00	---	---	---	---	---	---	---	---	R01.02.002.00	R01.02.002.00	R01.02.002.00	R01.02.002.00
29	Heating Element with Gasket Quantity	R02.04.350.00 2	R02.04.350.00 2	R02.04.351.00 2	R02.04.351.00 2	---	---	---	---	---	---	---	---	R02.04.352.00 2	R02.04.350.00 2	R02.04.350.00 2	R02.04.351.00 2
30	Contactors Quantity	02.01.015.00 1	02.01.015.00 1	02.01.015.00 1	02.01.015.00 1	---	---	---	---	---	---	---	---	02.01.015.00 1	02.01.016.00 1	02.01.016.00 1	02.01.016.00 1
31	Thermostat Control	02.16.024.00	02.16.024.00	02.16.024.00	02.16.024.00	---	---	---	---	---	---	---	---	02.16.024.00	02.16.024.00	02.16.024.00	02.16.024.00
32	Low Water Cut Off Board	02.01.006.00	02.01.006.00	02.01.006.00	02.01.006.00	---	---	---	---	---	---	---	---	02.01.006.00	02.01.001.00	02.01.001.00	02.01.001.00
33	Transformer, Step Down	02.17.004.00	02.17.004.00	02.17.004.00	02.17.004.00	---	---	---	---	---	---	---	---	02.17.005.00	---	---	---
34	Terminal Block	R02.15.046.00	R02.15.046.00	R02.15.046.00	R02.15.046.00	---	---	---	---	---	---	---	---	---	R02.15.046.00	R02.15.046.00	R02.15.046.00
35	Indicator Light, Red	02.19.154.00	02.19.154.00	02.19.154.00	02.19.154.00	---	---	---	---	---	---	---	---	02.19.154.00	02.19.151.00	02.19.151.00	02.19.151.00
36	Indicator Light, Green	---	---	---	---	---	---	---	---	---	---	---	---	---	02.19.150.00	02.19.150.00	02.19.150.00
37A	Power Fuse Block Quantity	---	---	---	---	---	---	---	---	---	---	---	---	---	---	---	---
37B	Power Fuse Block Quantity	---	---	---	---	---	---	---	---	---	---	---	---	---	---	---	---
37C	Power Fuse Block Quantity	---	---	---	---	---	---	---	---	---	---	---	---	---	---	---	---
37D	Power Fuse Block Quantity	---	---	---	---	---	---	---	---	---	---	---	---	---	---	---	---
38A	Power Fuse (2 Pack) Quantity	---	---	---	---	---	---	---	---	---	---	---	---	---	---	---	---
38B	Power Fuse (2 Pack) Quantity	---	---	---	---	---	---	---	---	---	---	---	---	---	---	---	---
38C	Power Fuse (2 Pack) Quantity	---	---	---	---	---	---	---	---	---	---	---	---	---	---	---	---
39	Control Fuse Block	02.03.022.00	02.03.022.00	02.03.022.00	02.03.022.00	---	---	---	---	---	---	---	---	02.03.023.00	02.03.004.00	02.03.004.00	02.03.004.00
40	Control Fuse (2 Pack)	R02.03.014.02	R02.03.014.02	R02.03.014.02	R02.03.014.02	---	---	---	---	---	---	---	---	R02.03.013.02	R02.03.001.02	R02.03.001.02	R02.03.001.02
41A	Tube, Inlet Water	03.30.004.00	03.30.004.00	03.30.004.00	03.30.004.00	---	---	---	---	---	---	---	---	03.30.004.00	03.30.004.00	03.30.004.00	03.30.004.00
41B	Tube, Inlet Water	---	---	---	---	---	---	---	---	---	---	---	---	---	---	---	---
42A	Nipple, Outlet Water	03.11.008.00	03.11.008.00	03.11.008.00	03.11.008.00	---	---	---	---	---	---	---	---	03.11.008.00	03.11.008.00	03.11.008.00	03.11.008.00
42B	Tube, Outlet Water	---	---	---	---	---	---	---	---	---	---	---	---	---	---	---	---
	Electrical Diagram	HC1-2455	HC1-2455	HC1-2455	HC1-2455	---	---	---	---	---	---	---	---	HC1-2455	HC1-391	HC1-391	HC1-391

Shaded area reflects export models only.

PARTS SPECIFIC TO MODEL C-7

ITEM	DESCRIPTION	240V Three Phase	380V Three Phase	415V Three Phase	480V Three Phase	600V Three Phase	380-400V CE 3 Wire	400-415V CE 3 Wire	380-400V CE 4 Wire	400-415V CE 4 Wire
28	Tank with Gaskets	R01.02.002.00	R01.02.003.00	R01.02.003.00	R01.02.002.00	---	R01.02.003.00	R01.02.003.00	R01.02.003.00	R01.02.003.00
29	Heating Element with Gasket Quantity	R02.04.351.00 2	R02.04.303.00 3	R02.04.510.00 3	R02.04.352.00 2	---	R02.04.307.00 3	R02.04.307.00 3	R02.04.307.00 3	R02.04.307.00 3
30	Contactors Quantity	02.01.016.00 1	02.01.016.00 1	02.01.016.00 1	02.01.016.00 1	---	02.01.016.00 2	02.01.016.00 2	02.01.016.00 2	02.01.016.00 2
31	Thermostat Control	02.16.024.00	02.16.024.00	02.16.024.00	02.16.024.00	---	02.16.024.00	02.16.024.00	02.16.024.00	02.16.024.00
32	Low Water Cut Off Board	02.01.001.00	02.01.001.00	02.01.001.00	02.01.001.00	---	02.01.164.00	02.01.164.00	02.01.164.00	02.01.164.00
33	Transformer, Step Down	---	R02.17.003.00	R02.17.002.00	R02.17.002.00	---	02.17.043.00	02.17.043.00	---	---
34	Terminal Block	R02.15.046.00	---	---	---	---	R02.15.035.00	R02.15.035.00	02.15.044.00	02.15.044.00
35	Indicator Light, Red	02.19.151.00	02.19.151.00	02.19.151.00	02.19.151.00	---	---	---	---	---
36	Indicator Light, Green	02.19.150.00	02.19.150.00	02.19.150.00	02.19.150.00	---	02.19.150.00	02.19.150.00	02.19.150.00	02.19.150.00
37A	Power Fuse Block Quantity	---	---	---	---	---	---	---	---	---
37B	Power Fuse Block Quantity	---	---	---	---	---	---	---	---	---
37C	Power Fuse Block Quantity	---	---	---	---	---	---	---	---	---
37D	Power Fuse Block Quantity	---	---	---	---	---	---	---	---	---
38A	Power Fuse (2 Pack) Quantity	---	---	---	---	---	---	---	---	---
38B	Power Fuse (2 Pack) Quantity	---	---	---	---	---	---	---	---	---
38C	Power Fuse (2 Pack) Quantity	---	---	---	---	---	---	---	---	---
39	Control Fuse Block	02.03.004.00	---	---	---	---	---	---	---	---
40	Control Fuse (2 Pack)	R02.03.001.02	R02.03.005.02	R02.03.005.02	R02.03.005.02	---	---	---	---	---
41A	Tube, Inlet Water	03.30.004.00	03.30.004.00	03.30.004.00	03.30.004.00	---	03.30.004.00	03.30.004.00	03.30.004.00	03.30.004.00
41B	Tube, Inlet Water	---	---	---	---	---	---	---	---	---
42A	Nipple, Outlet Water	03.11.008.00	03.11.008.00	03.11.008.00	03.11.008.00	---	03.11.008.00	03.11.008.00	03.11.008.00	03.11.008.00
42B	Tube, Outlet Water	---	---	---	---	---	---	---	---	---
	Electrical Diagram	HC1-391	HC1-396	HC1-396	HC1-393	---	HS1-4931	HS1-4931	HS1-4718	HS1-4718

Shaded area reflects export models only.

PARTS SPECIFIC TO MODEL C-9

ITEM	DESCRIPTION	208V		240V		480V		208V		240V		480V		208V		240V	
		Single Phase	Three Phase	Single Phase	Three Phase	Single Phase	Three Phase	Single Phase	Three Phase	Single Phase	Three Phase	Single Phase	Three Phase	Single Phase	Three Phase	Single Phase	Three Phase
28	Tank with Gaskets	R01.02.002.00	R01.02.002.00	R01.02.002.00	R01.02.002.00	---	---	R01.02.002.00	R01.02.002.00	R01.02.002.00	R01.02.002.00	---	---	R01.02.002.00	R01.02.002.00	R01.02.002.00	R01.02.002.00
29	Heating Element with Gasket Quantity	R02.04.450.00 2	R02.04.450.00 2	R02.04.451.00 2	R02.04.451.00 2	---	---	R02.04.453.00 2	R02.04.450.00 2	R02.04.450.00 2	R02.04.450.00 2	---	---	R02.04.450.00 2	R02.04.450.00 2	R02.04.451.00 2	R02.04.451.00 2
30	Contactors Quantity	02.01.015.00 1	02.01.015.00 1	02.01.015.00 1	02.01.015.00 1	---	---	02.01.015.00 1	02.01.015.00 1	02.01.015.00 1	02.01.015.00 1	---	---	02.01.016.00 1	02.01.016.00 1	02.01.016.00 1	02.01.016.00 1
31	Thermostat Control	02.16.024.00	02.16.024.00	02.16.024.00	02.16.024.00	---	---	02.16.024.00	02.16.024.00	02.16.024.00	02.16.024.00	---	---	02.16.024.00	02.16.024.00	02.16.024.00	02.16.024.00
32	Low Water Cut Off Board	02.01.006.00	02.01.006.00	02.01.006.00	02.01.006.00	---	---	02.01.006.00	02.01.006.00	02.01.006.00	02.01.006.00	---	---	02.01.001.00	02.01.001.00	02.01.001.00	02.01.001.00
33	Transformer, Step Down	02.17.004.00	02.17.004.00	02.17.004.00	02.17.004.00	---	---	02.17.005.00	02.17.004.00	02.17.004.00	02.17.004.00	---	---	---	---	---	---
34	Terminal Block	R02.15.046.00	R02.15.046.00	R02.15.046.00	R02.15.046.00	---	---	---	R02.15.046.00	R02.15.046.00	R02.15.046.00	---	---	R02.15.046.00	R02.15.046.00	R02.15.046.00	R02.15.046.00
35	Indicator Light, Red	02.19.154.00	02.19.154.00	02.19.154.00	02.19.154.00	---	---	---	02.19.154.00	02.19.154.00	02.19.154.00	---	---	02.19.151.00	02.19.151.00	02.19.151.00	02.19.151.00
36	Indicator Light, Green	---	---	---	---	---	---	---	---	---	---	---	---	02.19.150.00	02.19.150.00	02.19.150.00	02.19.150.00
37A	Power Fuse Block Quantity	---	---	---	---	---	---	---	---	---	---	---	---	---	---	---	---
37B	Power Fuse Block Quantity	---	---	---	---	---	---	---	---	---	---	---	---	---	---	---	---
37C	Power Fuse Block Quantity	---	---	---	---	---	---	---	---	---	---	---	---	---	---	---	---
37D	Power Fuse Block Quantity	---	---	---	---	---	---	---	---	---	---	---	---	---	---	---	---
38A	Power Fuse (2 Pack) Quantity	---	---	---	---	---	---	---	---	---	---	---	---	---	---	---	---
38B	Power Fuse (2 Pack) Quantity	---	---	---	---	---	---	---	---	---	---	---	---	---	---	---	---
38C	Power Fuse (2 Pack) Quantity	---	---	---	---	---	---	---	---	---	---	---	---	---	---	---	---
39	Control Fuse Block	02.03.022.00	02.03.022.00	02.03.022.00	02.03.022.00	---	---	02.03.023.00	02.03.022.00	02.03.022.00	02.03.023.00	---	---	02.03.004.00	02.03.004.00	02.03.004.00	02.03.004.00
40	Control Fuse (2 Pack)	R02.03.014.02	R02.03.014.02	R02.03.014.02	R02.03.014.02	---	---	R02.03.013.02	R02.03.014.02	R02.03.014.02	R02.03.013.02	---	---	R02.03.001.02	R02.03.001.02	R02.03.001.02	R02.03.001.02
41A	Tube, Inlet Water	03.30.004.00	03.30.004.00	03.30.004.00	03.30.004.00	---	---	03.30.004.00	03.30.004.00	03.30.004.00	03.30.004.00	---	---	03.30.004.00	03.30.004.00	03.30.004.00	03.30.004.00
41B	Tube, Inlet Water	---	---	---	---	---	---	---	---	---	---	---	---	---	---	---	---
42A	Nipple, Outlet Water	03.11.008.00	03.11.008.00	03.11.008.00	03.11.008.00	---	---	03.11.008.00	03.11.008.00	03.11.008.00	03.11.008.00	---	---	03.11.008.00	03.11.008.00	03.11.008.00	03.11.008.00
42B	Tube, Outlet Water	---	---	---	---	---	---	---	---	---	---	---	---	---	---	---	---
	Electrical Diagram	HC1-2455	HC1-2455	HC1-2455	HC1-2455	---	---	HC1-2455	HC1-2455	HC1-2455	HC1-2455	---	---	HC1-391	HC1-391	HC1-391	HC1-391

Shaded area reflects export models only.

PARTS SPECIFIC TO MODEL C-9

ITEM	DESCRIPTION	240V Three Phase	380V Three Phase	415V Three Phase	480V Three Phase	600V Three Phase	380-400V CE 3 Wire	400-415V CE 3 Wire	380-400V CE 4 Wire	400-415V CE 4 Wire
28	Tank with Gaskets	R01.02.002.00	R01.02.003.00	R01.02.003.00	R01.02.002.00	R01.02.003.00	R01.02.003.00	R01.02.003.00	R01.02.003.00	R01.02.003.00
29	Heating Element with Gasket Quantity	R02.04.451.00 2	R02.04.351.00 3	R02.04.303.00 3	R02.04.453.00 2	R02.04.304.00 3	R02.04.303.00 3	R02.04.303.00 3	R02.04.303.00 3	R02.04.303.00 3
30	Contactor Quantity	02.01.016.00 1	02.01.016.00 1	02.01.016.00 1	02.01.016.00 1	02.01.016.00 1	02.01.016.00 2	02.01.016.00 2	02.01.016.00 2	02.01.016.00 2
31	Thermostat Control	02.16.024.00	02.16.024.00	02.16.024.00	02.16.024.00	02.16.024.00	02.16.024.00	02.01.024.00	02.16.024.00	02.16.024.00
32	Low Water Cut Off Board	02.01.001.00	02.01.001.00	02.01.001.00	02.01.001.00	02.01.001.00	02.01.164.00	02.01.164.00	02.01.164.00	02.01.164.00
33	Transformer, Step Down	---	02.17.003.00	02.17.002.00	02.17.002.00	02.17.009.00	02.17.043.00	02.17.043.00	---	---
34	Terminal Block	R02.15.046.00	---	---	---	---	R02.15.035.00	R02.15.035.00	02.15.044.00	02.15.044.00
35	Indicator Light, Red	02.19.151.00	02.19.151.00	02.19.151.00	02.19.151.00	02.19.151.00	---	---	---	---
36	Indicator Light, Green	02.19.150.00	02.19.150.00	02.19.150.00	02.19.150.00	02.19.150.00	02.19.150.00	02.19.150.00	02.19.150.00	02.19.150.00
37A	Power Fuse Block Quantity	---	---	---	---	---	---	---	---	---
37B	Power Fuse Block Quantity	---	---	---	---	---	---	---	---	---
37C	Power Fuse Block Quantity	---	---	---	---	---	---	---	---	---
37D	Power Fuse Block Quantity	---	---	---	---	---	---	---	---	---
38A	Power Fuse (2 Pack) Quantity	---	---	---	---	---	---	---	---	---
38B	Power Fuse (2 Pack) Quantity	---	---	---	---	---	---	---	---	---
38C	Power Fuse (2 Pack) Quantity	---	---	---	---	---	---	---	---	---
39	Control Fuse Block	02.03.004.00	---	---	---	---	---	---	---	---
40	Control Fuse (2 Pack)	R02.03.001.02	R02.03.005.02	R02.03.005.02	R02.03.005.02	R02.03.021.02	---	---	---	---
41A	Tube, Inlet Water	03.30.004.00	03.30.004.00	03.30.004.00	03.30.004.00	03.30.004.00	03.30.004.00	03.30.004.00	03.30.004.00	03.30.004.00
41B	Tube, Inlet Water	---	---	---	---	---	---	---	---	---
42A	Nipple, Outlet Water	03.11.008.00	03.11.008.00	03.11.008.00	03.11.008.00	03.11.008.00	03.11.008.00	03.11.008.00	03.11.008.00	03.11.008.00
42B	Tube, Outlet Water	---	---	---	---	---	---	---	---	---
	Electrical Diagram	HC1-391	HC1-396	HC1-396	HC1-393	HC1-396	HS1-4931	HS1-4931	HS1-4718	HS1-4718

Shaded area reflects **export models only**.

PARTS SPECIFIC TO MODEL C-12

ITEM	DESCRIPTION	208V		240V		480V		208V		240V		480V	
		Single Phase	Three Phase	Single Phase	Three Phase	Single Phase	Three Phase	Single Phase	Three Phase	Single Phase	Three Phase	Single Phase	Three Phase
28	Tank with Gaskets	R01.02.003.00	R01.02.003.00	R01.02.003.00	R01.02.003.00	---	---	---	---	---	---	---	---
29	Heating Element with Gasket Quantity	R02.04.400.00 3	R02.04.400.00 3	R02.04.401.00 3	R02.04.401.00 3	---	---	---	---	---	---	---	---
30	Contactor Quantity	02.01.017.00 1	02.01.015.00 1	02.01.017.00 1	02.01.015.00 1	---	---	---	---	---	---	---	---
31	Thermostat Control	02.16.024.00	02.16.024.00	02.16.024.00	02.16.024.00	---	---	---	---	---	---	---	---
32	Low Water Cut Off Board	02.01.006.00	02.01.006.00	02.01.006.00	02.01.006.00	---	---	---	---	---	---	---	---
33	Transformer, Step Down	02.17.004.00	02.17.004.00	02.17.004.00	02.17.004.00	---	---	---	---	---	---	---	---
34	Terminal Block	---	R02.15.046.00	---	R02.15.046.00	---	---	---	---	---	---	---	---
35	Indicator Light, Red	02.19.154.00	02.19.154.00	02.19.154.00	02.19.154.00	---	---	---	---	---	---	---	---
36	Indicator Light, Green	---	---	---	---	---	---	---	---	---	---	---	---
37A	Power Fuse Block Quantity	02.41.005.00 1	---	02.41.005.00 1	---	---	---	---	---	---	---	---	---
37B	Power Fuse Block Quantity	---	---	---	---	---	---	---	---	---	---	---	---
37C	Power Fuse Block Quantity	---	---	---	---	---	---	---	---	---	---	---	---
37D	Power Fuse Block Quantity	---	---	---	---	---	---	---	---	---	---	---	---
38A	Power Fuse (2 Pack) (35 Amp) Quantity	R02.03.030.02 1	---	R02.03.030.02 1	---	---	---	---	---	---	---	---	---
38B	Power Fuse (2 Pack) (50 Amp) Quantity	R02.03.032.02 1	---	R02.03.032.02 1	---	---	---	---	---	---	---	---	---
38C	Power Fuse (2 Pack) Quantity	---	---	---	---	---	---	---	---	---	---	---	---
39	Control Fuse Block	02.03.022.00	02.03.022.00	02.03.022.00	02.03.022.00	---	---	---	---	---	---	---	---
40	Control Fuse (2 Pack)	R02.03.014.02	R02.03.014.02	R02.03.014.02	R02.03.014.02	---	---	---	---	---	---	---	---
41A	Tube, Inlet Water	03.30.004.00	03.30.004.00	03.30.004.00	03.30.004.00	---	---	---	---	---	---	---	---
41B	Tube, Inlet Water	---	---	---	---	---	---	---	---	---	---	---	---
42A	Nipple, Outlet Water	03.11.008.00	03.11.008.00	03.11.008.00	03.11.008.00	---	---	---	---	---	---	---	---
42B	Tube, Outlet Water	---	---	---	---	---	---	---	---	---	---	---	---
	Electrical Diagram	HS1-2073	HC1-2465	HS1-2073	HC1-2465	---	---	---	---	---	---	---	---

Shaded area reflects export models only.

PARTS SPECIFIC TO MODEL C-12

ITEM	DESCRIPTION	240V Three Phase	380V Three Phase	415V Three Phase	480V Three Phase	600V Three Phase	380-400V CE 3 Wire	400-415V CE 3 Wire	380-400V CE 4 Wire	400-415V CE 4 Wire
28	Tank with Gaskets	R01.02.003.00	R01.02.003.00	R01.02.003.00	R01.02.003.00	R01.02.003.00	R01.02.003.00	R01.02.003.00	R01.02.003.00	R01.02.003.00
29	Heating Element with Gasket Quantity	R02.04.401.00 3	R02.04.501.00 3	R02.04.401.00 3	R02.04.404.00 3	R02.04.402.00 3	R02.04.401.00 3	R02.04.401.00 3	R02.04.401.00 3	R02.04.401.00 3
30	Contactor Quantity	02.01.018.00 1	02.01.016.00 1	02.01.016.00 1	02.01.016.00 1	02.01.016.00 1	02.01.016.00 2	02.01.016.00 2	02.01.016.00 2	02.01.016.00 2
31	Thermostat Control	02.16.024.00	02.16.024.00	02.16.024.00	02.16.024.00	02.16.024.00	02.16.024.00	02.01.024.00	02.16.024.00	02.16.024.00
32	Low Water Cut Off Board	02.01.001.00	02.01.001.00	02.01.001.00	02.01.001.00	02.01.001.00	02.01.164.00	02.01.164.00	02.01.164.00	02.01.164.00
33	Transformer, Step Down	---	R02.17.003.00	R02.17.002.00	R02.17.002.00	02.17.009.00	02.17.043.00	02.17.043.00	---	---
34	Terminal Block	R02.15.046.00	---	---	---	---	R02.15.035.00	R02.15.035.00	02.15.044.00	02.15.044.00
35	Indicator Light, Red	02.19.151.00	02.19.151.00	02.19.151.00	02.19.151.00	02.19.151.00	---	---	---	---
36	Indicator Light, Green	02.19.150.00	02.19.150.00	02.19.150.00	02.19.150.00	02.19.150.00	02.19.150.00	02.19.150.00	02.19.150.00	02.19.150.00
37A	Power Fuse Block Quantity	---	---	---	---	---	---	---	---	---
37B	Power Fuse Block Quantity	---	---	---	---	---	---	---	---	---
37C	Power Fuse Block Quantity	---	---	---	---	---	---	---	---	---
37D	Power Fuse Block Quantity	---	---	---	---	---	---	---	---	---
38A	Power Fuse (2 Pack) Quantity	---	---	---	---	---	---	---	---	---
38B	Power Fuse (2 Pack) Quantity	---	---	---	---	---	---	---	---	---
38C	Power Fuse (2 Pack) Quantity	---	---	---	---	---	---	---	---	---
39	Control Fuse Block	02.03.004.00	---	---	---	---	---	---	---	---
40	Control Fuse (2 Pack)	R02.03.001.02	R02.03.005.02	R02.03.005.02	R02.03.005.02	R02.03.021.02	---	---	---	---
41A	Tube, Inlet Water	03.30.004.00	03.30.004.00	03.30.004.00	03.30.004.00	03.30.004.00	03.30.004.00	03.30.004.00	03.30.004.00	03.30.004.00
41B	Tube, Inlet Water	---	---	---	---	---	---	---	---	---
42A	Nipple, Outlet Water	03.11.008.00	03.11.008.00	03.11.008.00	03.11.008.00	03.11.008.00	03.11.008.00	03.11.008.00	03.11.008.00	03.11.008.00
42B	Tube, Outlet Water	---	---	---	---	---	---	---	---	---
42B	Electrical Diagram	HC1-390	HC1-396	HC1-396	HC1-395	HC1-396	HS1-4931	HS1-4931	HS1-4718	HS1-4718

Shaded area reflects export models only.

PARTS SPECIFIC TO MODEL C-13

ITEM	DESCRIPTION	208V		240V		480V		208V		240V		480V	
		Single Phase	Three Phase	Single Phase	Three Phase	Single Phase	Three Phase	Single Phase	Three Phase	Single Phase	Three Phase	Single Phase	Three Phase
28	Tank with Gaskets	R01.02.003.00	R01.02.003.00	R01.02.003.00	R01.02.003.00	---	---	R01.02.003.00	R01.02.003.00	R01.02.003.00	R01.02.003.00	---	---
29	Heating Element with Gasket Quantity	R02.04.450.00 3	R02.04.450.00 3	R02.04.451.00 3	R02.04.451.00 3	---	---	R02.04.453.00 3	R02.04.450.00 3	R02.04.450.00 3	R02.04.450.00 3	---	---
30	Contactor Quantity	02.01.017.00 1	02.01.015.00 1	02.01.017.00 1	02.01.015.00 1	---	---	02.01.015.00 1	02.01.018.00 1	02.01.018.00 1	02.01.018.00 1	---	---
31	Thermostat Control	02.16.024.00	02.16.024.00	02.16.024.00	02.16.024.00	---	---	02.16.024.00	02.16.024.00	02.16.024.00	02.16.024.00	---	---
32	Low Water Cut Off Board	02.01.006.00	02.01.006.00	02.01.006.00	02.01.006.00	---	---	02.01.006.00	02.01.006.00	02.01.001.00	02.01.001.00	---	---
33	Transformer, Step Down	02.17.004.00	02.17.004.00	02.17.004.00	02.17.004.00	---	---	02.17.005.00	---	---	---	---	---
34	Terminal Block	---	R02.15.046.00	---	R02.15.046.00	---	---	---	R02.15.046.00	R02.15.046.00	R02.15.046.00	---	---
35	Indicator Light, Red	02.19.154.00	02.19.154.00	02.19.154.00	02.19.154.00	---	---	02.19.154.00	02.19.151.00	02.19.151.00	02.19.151.00	---	---
36	Indicator Light, Green	---	---	---	---	---	---	---	02.19.150.00	02.19.150.00	02.19.150.00	---	---
37A	Power Fuse Block Quantity	02.41.005.00 1	---	02.41.005.00 1	---	---	---	---	---	---	---	---	---
37B	Power Fuse Block Quantity	---	---	---	---	---	---	---	---	---	---	---	---
37C	Power Fuse Block Quantity	---	---	---	---	---	---	---	---	---	---	---	---
37D	Power Fuse Block Quantity	---	---	---	---	---	---	---	---	---	---	---	---
38A	Power Fuse (2 Pack) (35 Amp) Quantity	R02.03.030.02 1	---	R02.03.030.02 1	---	---	---	---	---	---	---	---	---
38B	Power Fuse (2 Pack) (60 Amp) Quantity	R02.03.033.02 1	---	R02.03.033.02 1	---	---	---	---	---	---	---	---	---
38C	Power Fuse (2 Pack) Quantity	---	---	---	---	---	---	---	---	---	---	---	---
39	Control Fuse Block	02.03.022.00	02.03.022.00	02.03.022.00	02.03.022.00	---	---	02.03.023.00	02.03.004.00	02.03.004.00	02.03.004.00	---	---
40	Control Fuse (2 Pack)	R02.03.014.02	R02.03.014.02	R02.03.014.02	R02.03.014.02	---	---	R02.03.013.02	R02.03.001.02	R02.03.001.02	R02.03.001.02	---	---
41A	Tube, Inlet Water	03.30.004.00	03.30.004.00	03.30.004.00	03.30.004.00	---	---	03.30.004.00	03.30.004.00	03.30.004.00	03.30.004.00	---	---
41B	Tube, Inlet Water	---	---	---	---	---	---	---	---	---	---	---	---
42A	Nipple, Outlet Water	03.11.008.00	03.11.008.00	03.11.008.00	03.11.008.00	---	---	03.11.008.00	03.11.008.00	03.11.008.00	03.11.008.00	---	---
42B	Tube, Outlet Water	---	---	---	---	---	---	---	---	---	---	---	---
	Electrical Diagram	HS1-2073	HC1-2465	HS1-2073	HC1-2465	---	---	HC1-2465	HC1-390	HC1-390	HC1-390	---	---

Shaded area reflects **export models only**.

PARTS SPECIFIC TO MODEL C-13

ITEM	DESCRIPTION	240V Three Phase	380V Three Phase	415V Three Phase	480V Three Phase	600V Three Phase	380-400V 3 Wire CE	400-415V 3 Wire CE	380-400V CE 4 Wire	400-415V CE 4 Wire
28	Tank with Gaskets	R01.02.003.00	R01.02.003.00	R01.02.003.00	R01.02.003.00	R01.02.003.00	R01.02.003.00	R01.02.003.00	R01.02.003.00	R01.02.003.00
29	Heating Element with Gasket Quantity	R02.04.451.00 3	R02.04.451.00 3	R02.04.451.00 3	R02.04.453.00 3	R02.04.353.00 3	R02.04.451.00 3	R02.04.451.00 3	R02.04.451.00 3	R02.04.451.00 3
30	Contactor Quantity	02.01.018.00 1	02.01.016.00 1	02.01.016.00 1	02.01.016.00 1	02.01.016.00 1	02.01.016.00 2	02.01.016.00 2	02.01.016.00 2	02.01.016.00 2
31	Thermostat Control	02.16.024.00	02.16.024.00	02.16.024.00	02.16.024.00	02.16.024.00	02.16.024.00	02.01.024.00	02.16.024.00	02.16.024.00
32	Low Water Cut Off Board	02.01.001.00	02.01.001.00	02.01.001.00	02.01.001.00	02.01.001.00	02.01.164.00	02.01.164.00	02.01.164.00	02.01.164.00
33	Transformer, Step Down	---	R02.17.003.00	R02.17.002.00	R02.17.002.00	02.17.009.00	02.17.043.00	02.17.043.00	---	---
34	Terminal Block	R02.15.046.00	---	---	---	---	R02.15.035.00	02.15.044.00	02.15.044.00	02.15.044.00
35	Indicator Light, Red	02.19.151.00	02.19.151.00	02.19.151.00	02.19.151.00	02.19.151.00	---	---	---	---
36	Indicator Light, Green	02.19.150.00	02.19.150.00	02.19.150.00	02.19.150.00	02.19.150.00	02.19.150.00	02.19.150.00	02.19.151.00	02.19.151.00
37A	Power Fuse Block Quantity	---	---	---	---	---	---	---	---	---
37B	Power Fuse Block Quantity	---	---	---	---	---	---	---	---	---
37C	Power Fuse Block Quantity	---	---	---	---	---	---	---	---	---
37D	Power Fuse Block Quantity	---	---	---	---	---	---	---	---	---
38A	Power Fuse (2 Pack) Quantity	---	---	---	---	---	---	---	---	---
38B	Power Fuse (2 Pack) Quantity	---	---	---	---	---	---	---	---	---
38C	Power Fuse (2 Pack) Quantity	---	---	---	---	---	---	---	---	---
39	Control Fuse Block	02.03.004.00	---	---	---	---	---	---	---	---
40	Control Fuse (2 Pack)	R02.03.001.02	R02.03.005.02	R02.03.005.02	R02.03.005.02	R02.03.021.02	---	---	---	---
41A	Tube, Inlet Water	03.30.004.00	03.30.004.00	03.30.004.00	03.30.004.00	03.30.004.00	03.30.004.00	03.30.004.00	03.30.004.00	03.30.004.00
41B	Tube, Inlet Water	---	---	---	---	---	---	---	---	---
42A	Nipple, Outlet Water	03.11.008.00	03.11.008.00	03.11.008.00	03.11.008.00	03.11.008.00	03.11.008.00	03.11.008.00	03.11.008.00	03.11.008.00
42B	Tube, Outlet Water	---	---	---	---	---	---	---	---	---
42B	Electrical Diagram	HC1-390	HC1-396	HC1-396	HC1-395	HC1-396	HS1-4931	HS1-4931	HS1-4718	HS1-4718

Shaded area reflects export models only.

PARTS SPECIFIC TO MODEL C-15

ITEM	DESCRIPTION	208V		240V		480V		208V		240V		480V	
		Single Phase	Three Phase	Single Phase	Three Phase	Single Phase	Three Phase	Single Phase	Three Phase	Single Phase	Three Phase	Single Phase	Three Phase
28	Tank with Gaskets	R01.02.003.00	R01.02.003.00	R01.02.003.00	R01.02.003.00	---	---	R01.02.003.00	R01.02.003.00	R01.02.003.00	R01.02.003.00	R01.02.003.00	R01.02.003.00
29	Heating Element with Gasket Quantity	R02.04.500.00 3	R02.04.500.00 3	R02.04.501.00 3	R02.04.501.00 3	---	---	R02.04.502.00 3	R02.04.500.00 3	R02.04.500.00 3	R02.04.500.00 3	R02.04.500.00 3	R02.04.501.00 3
30	Contactor Quantity	02.01.017.00 1	02.01.015.00 1	02.01.017.00 1	02.01.015.00 1	---	---	02.01.015.00 1	02.01.018.00 1	02.01.018.00 1	02.01.018.00 1	02.01.018.00 1	02.01.018.00 1
31	Thermostat Control	02.16.024.00	02.16.024.00	02.16.024.00	02.16.024.00	---	---	02.16.024.00	02.16.024.00	02.16.024.00	02.16.024.00	02.16.024.00	02.16.024.00
32	Low Water Cut Off Board	02.01.006.00	02.01.006.00	02.01.006.00	02.01.006.00	---	---	02.01.006.00	02.01.006.00	02.01.006.00	02.01.006.00	02.01.006.00	02.01.001.00
33	Transformer, Step Down	02.17.004.00	02.17.004.00	02.17.004.00	02.17.004.00	---	---	02.17.004.00	02.17.004.00	02.17.004.00	02.17.004.00	02.17.005.00	---
34	Terminal Block	---	R02.15.046.00	---	R02.15.046.00	---	---	---	---	---	---	---	---
35	Indicator Light, Red	02.19.154.00	02.19.154.00	02.19.154.00	02.19.154.00	---	---	02.19.154.00	02.19.154.00	02.19.154.00	02.19.151.00	02.19.151.00	02.19.151.00
36	Indicator Light, Green	---	---	---	---	---	---	---	---	---	---	---	---
37A	Power Fuse Block Quantity	02.41.005.00 1	---	02.41.005.00 1	---	---	---	---	---	---	---	---	---
37B	Power Fuse Block Quantity	---	---	---	---	---	---	---	---	---	---	---	---
37C	Power Fuse Block Quantity	---	---	---	---	---	---	---	---	---	---	---	---
37D	Power Fuse Block Quantity	---	---	---	---	---	---	---	---	---	---	---	---
38A	Power Fuse (2 Pack) (35 Amp) Quantity	R02.03.030.02 1	---	R02.03.030.02 1	---	---	---	---	---	---	---	---	---
38B	Power Fuse (2 Pack) (60 Amp) Quantity	R02.03.033.02 1	---	R02.03.033.02 1	---	---	---	---	---	---	---	---	---
38C	Power Fuse (2 Pack) Quantity	---	---	---	---	---	---	---	---	---	---	---	---
39	Control Fuse Block	02.03.022.00	02.03.022.00	02.03.022.00	02.03.022.00	---	---	02.03.023.00	02.03.004.00	02.03.004.00	02.03.004.00	02.03.004.00	02.03.004.00
40	Control Fuse (2 Pack)	R02.03.014.02	R02.03.014.02	R02.03.014.02	R02.03.014.02	---	---	R02.03.013.02	R02.03.001.02	R02.03.001.02	R02.03.001.02	R02.03.001.02	R02.03.001.02
41A	Tube, Inlet Water	03.30.004.00	03.30.004.00	03.30.004.00	03.30.004.00	---	---	03.30.004.00	03.30.004.00	03.30.004.00	03.30.004.00	03.30.004.00	03.30.004.00
41B	Tube, Inlet Water	---	---	---	---	---	---	---	---	---	---	---	---
42A	Nipple, Outlet Water	03.11.008.00	03.11.008.00	03.11.008.00	03.11.008.00	---	---	03.11.008.00	03.11.008.00	03.11.008.00	03.11.008.00	03.11.008.00	03.11.008.00
42B	Tube, Outlet Water	---	---	---	---	---	---	---	---	---	---	---	---
	Electrical Diagram	HS1-2073	HC1-2465	HS1-2073	HC1-2465	---	---	HC1-2465	HC1-390	HC1-390	HC1-390	HC1-390	HC1-390

Shaded area reflects **export models only**.

PARTS SPECIFIC TO MODEL C-15

ITEM	DESCRIPTION	240V Three Phase	380V Three Phase	415V Three Phase	480V Three Phase	600V Three Phase	380-400V CE 3 Wire	400-415V CE 3 Wire	380-400V CE 4 Wire	400-415V CE 4 Wire
28	Tank with Gaskets	R01.02.003.00	R01.02.003.00	R01.02.003.00	R01.02.003.00	R01.02.003.00	R01.02.003.00	R01.02.003.00	R01.02.003.00	R01.02.003.00
29	Heating Element with Gasket Quantity	R02.04.501.00 3	R02.04.603.00 3	R02.04.501.00 3	R02.04.502.00 3	R02.04.510.00 3	R02.04.501.00 3	R02.04.501.00 3	R02.04.501.00 3	R02.04.501.00 3
30	Contactor Quantity	02.01.018.00 1	02.01.016.00 1	02.01.016.00 1	02.01.016.00 1	02.01.016.00 1	02.01.016.00 2	02.01.016.00 2	02.01.016.00 2	02.01.016.00 2
31	Thermostat Control	02.16.024.00	02.16.024.00	02.16.024.00	02.16.024.00	02.16.024.00	02.16.024.00	02.01.024.00	02.16.024.00	02.16.024.00
32	Low Water Cut Off Board	02.01.001.00	02.01.001.00	02.01.001.00	02.01.001.00	02.01.001.00	02.01.164.00	02.01.164.00	02.01.164.00	02.01.164.00
33	Transformer, Step Down	---	R02.17.003.00	R02.17.002.00	R02.17.002.00	02.17.009.00	02.17.043.00	02.17.043.00	---	---
34	Terminal Block	R02.15.046.00	---	---	---	---	R02.15.035.00	R02.15.035.00	02.15.044.00	02.15.044.00
35	Indicator Light, Red	02.19.151.00	02.19.151.00	02.19.151.00	02.19.151.00	02.19.151.00	---	---	---	---
36	Indicator Light, Green	02.19.150.00	02.19.150.00	02.19.150.00	02.19.150.00	02.19.150.00	02.19.150.00	02.19.150.00	02.19.150.00	02.19.150.00
37A	Power Fuse Block Quantity	---	---	---	---	---	---	---	---	---
37B	Power Fuse Block Quantity	---	---	---	---	---	---	---	---	---
37C	Power Fuse Block Quantity	---	---	---	---	---	---	---	---	---
37D	Power Fuse Block Quantity	---	---	---	---	---	---	---	---	---
38A	Power Fuse (2 Pack) Quantity	---	---	---	---	---	---	---	---	---
38B	Power Fuse (2 Pack) Quantity	---	---	---	---	---	---	---	---	---
38C	Power Fuse (2 Pack) Quantity	---	---	---	---	---	---	---	---	---
39	Control Fuse Block	02.03.004.00	---	---	---	---	---	---	---	---
40	Control Fuse (2 Pack)	R02.03.001.02	R02.03.005.02	R02.03.005.02	R02.03.005.02	R02.03.021.02	---	---	---	---
41A	Tube, Inlet Water	03.30.004.00	03.30.004.00	03.30.004.00	03.30.004.00	03.30.004.00	03.30.004.00	03.30.004.00	03.30.004.00	03.30.004.00
41B	Tube, Inlet Water	---	---	---	---	---	---	---	---	---
42A	Nipple, Outlet Water	03.11.008.00	03.11.008.00	03.11.008.00	03.11.008.00	03.11.008.00	03.11.008.00	03.11.008.00	03.11.008.00	03.11.008.00
42B	Tube, Outlet Water	---	---	---	---	---	---	---	---	---
42B	Electrical Diagram	HC1-390	HC1-396	HC1-396	HC1-395	HC1-396	HS1-4931	HS1-4931	HS1-4718	HS1-4718

Shaded area reflects **export models only**.

PARTS SPECIFIC TO MODEL C-17

ITEM	DESCRIPTION	208V		240V		480V		208V		208V	
		Single Phase	Three Phase	Single Phase	Three Phase	Single Phase	Three Phase	Single Phase	Three Phase	Single Phase	Three Phase
28	Tank with Gaskets	---	R01.02.003.00	---	---	---	---	---	---	R01.02.003.00	---
29	Heating Element with Gasket Quantity	---	R02.04.600.00	---	---	---	---	---	---	R02.04.600.00	---
30	Contactors Quantity	---	3 02.01.015.00	---	---	---	---	---	---	3 02.01.018.00	---
31	Thermostat Control	---	1 02.16.024.00	---	---	---	---	---	---	1 02.16.024.00	---
32	Low Water Cut Off Board	---	02.01.006.00	---	---	---	---	---	---	02.01.001.00	---
33	Transformer, Step Down	---	02.17.004.00	---	---	---	---	---	---	---	---
34	Terminal Block	---	R02.15.046.00	---	---	---	---	---	---	R02.15.046.00	---
35	Indicator Light, Red	---	02.19.154.00	---	---	---	---	---	---	02.19.151.00	---
36	Indicator Light, Green	---	---	---	---	---	---	---	---	02.19.150.00	---
37A	Power Fuse Block Quantity	---	---	---	---	---	---	---	---	---	---
37B	Power Fuse Block Quantity	---	---	---	---	---	---	---	---	---	---
37C	Power Fuse Block Quantity	---	---	---	---	---	---	---	---	---	---
37D	Power Fuse Block Quantity	---	---	---	---	---	---	---	---	---	---
38A	Power Fuse (2 Pack) Quantity	---	---	---	---	---	---	---	---	---	---
38B	Power Fuse (2 Pack) Quantity	---	---	---	---	---	---	---	---	---	---
38C	Power Fuse (2 Pack) Quantity	---	---	---	---	---	---	---	---	---	---
39	Control Fuse Block	---	02.03.022.00	---	---	---	---	---	---	02.03.004.00	---
40	Control Fuse (2 Pack)	---	R02.03.014.02	---	---	---	---	---	---	R02.03.001.02	---
41A	Tube, Inlet Water	---	03.30.004.00	---	---	---	---	---	---	03.30.004.00	---
41B	Tube, Inlet Water	---	---	---	---	---	---	---	---	---	---
42A	Nipple, Outlet Water	---	03.11.008.00	---	---	---	---	---	---	03.11.008.00	---
42B	Tube, Outlet Water Electrical Diagram	---	---	---	---	---	---	---	---	---	---
		---	HC1-2465	---	---	---	---	---	---	HC1-390	---

Shaded area reflects export models only.

PARTS SPECIFIC TO MODEL C-17

ITEM	DESCRIPTION	240V Three Phase	380V Three Phase	415V Three Phase	480V Three Phase	600V Three Phase	380-400V CE 3 Wire	400-415V CE 3 Wire	380-400V CE 4 Wire	400-415V CE 4 Wire
28	Tank with Gaskets	---	---	---	---	---	---	---	---	---
29	Heating Element with Gasket Quantity	---	---	---	---	---	---	---	---	---
30	Contactors Quantity	---	---	---	---	---	---	---	---	---
31	Thermostat Control	---	---	---	---	---	---	---	---	---
32	Low Water Cut Off Board	---	---	---	---	---	---	---	---	---
33	Transformer, Step Down	---	---	---	---	---	---	---	---	---
34	Terminal Block	---	---	---	---	---	---	---	---	---
35	Indicator Light, Red	---	---	---	---	---	---	---	---	---
36	Indicator Light, Green	---	---	---	---	---	---	---	---	---
37A	Power Fuse Block Quantity	---	---	---	---	---	---	---	---	---
37B	Power Fuse Block Quantity	---	---	---	---	---	---	---	---	---
37C	Power Fuse Block Quantity	---	---	---	---	---	---	---	---	---
37D	Power Fuse Block Quantity	---	---	---	---	---	---	---	---	---
38A	Power Fuse (2 Pack) Quantity	---	---	---	---	---	---	---	---	---
38B	Power Fuse (2 Pack) Quantity	---	---	---	---	---	---	---	---	---
38C	Power Fuse (2 Pack) Quantity	---	---	---	---	---	---	---	---	---
39	Control Fuse Block	---	---	---	---	---	---	---	---	---
40	Control Fuse (2 Pack)	---	---	---	---	---	---	---	---	---
41A	Tube, Inlet Water	---	---	---	---	---	---	---	---	---
41B	Tube, Inlet Water	---	---	---	---	---	---	---	---	---
42A	Nipple, Outlet Water	---	---	---	---	---	---	---	---	---
42B	Tube, Outlet Water	---	---	---	---	---	---	---	---	---
	Electrical Diagram	---	---	---	---	---	---	---	---	---

Shaded area reflects export models only.

PARTS SPECIFIC TO MODEL C-18

ITEM	DESCRIPTION	208V		240V		480V		208V		240V		480V		208V		240V	
		Single Phase	Three Phase	Single Phase	Three Phase	Single Phase	Three Phase	Single Phase	Three Phase	Single Phase	Three Phase	Single Phase	Three Phase	Single Phase	Three Phase	Single Phase	Three Phase
28	Tank with Gaskets	R01.02.003.00	---	R01.02.003.00	R01.02.003.00	---	R01.02.003.00	R01.02.003.00	---	R01.02.003.00	R01.02.003.00	---	R01.02.003.00	R01.02.003.00	---	R01.02.003.00	R01.02.003.00
29	Heating Element with Gasket Quantity	R02.04.600A.00 3	---	R02.04.603.00 3	R02.04.603.00 3	---	R02.04.605.00 3	R02.04.600A.00 3	---	R02.04.603.00 3	R02.04.600A.00 3	---	R02.04.605.00 3	R02.04.600A.00 3	---	R02.04.603.00 3	R02.04.603.00 3
30	Contactor Quantity	02.01.015.00 2	---	02.01.015.00 2	02.01.015.00 1	---	02.01.015.00 1	02.01.015.00 1	---	02.01.015.00 1	02.01.015.00 1	---	02.01.015.00 1	02.01.015.00 1	---	02.01.015.00 1	02.01.015.00 1
31	Thermostat Control	02.16.024.00	---	02.16.024.00	02.16.024.00	---	02.16.024.00	02.16.024.00	---	02.16.024.00	02.16.024.00	---	02.16.024.00	02.16.024.00	---	02.16.024.00	02.16.024.00
32	Low Water Cut Off Board	02.01.006.00	---	02.01.006.00	02.01.006.00	---	02.01.006.00	02.01.006.00	---	02.01.006.00	02.01.006.00	---	02.01.006.00	02.01.006.00	---	02.01.006.00	02.01.006.00
33	Transformer, Step Down	02.17.004.00	---	02.17.004.00	02.17.004.00	---	02.17.004.00	02.17.004.00	---	02.17.004.00	02.17.004.00	---	02.17.004.00	02.17.004.00	---	02.17.004.00	02.17.004.00
34	Terminal Block	---	---	---	R02.15.046.00	---	---	---	---	---	---	---	---	---	---	---	---
35	Indicator Light, Red	02.19.154.00	---	02.19.154.00	02.19.154.00	---	02.19.154.00	02.19.154.00	---	02.19.154.00	02.19.154.00	---	02.19.154.00	02.19.151.00	---	02.19.151.00	02.19.151.00
36	Indicator Light, Green	---	---	---	---	---	---	---	---	---	---	---	---	---	---	---	---
37A	Power Fuse Block Quantity	02.41.010.00 2	---	02.41.010.00 2	---	---	---	02.41.010.00 2	---	---	---	---	---	---	---	---	---
37B	Power Fuse Block Quantity	---	---	---	---	---	---	---	---	---	---	---	---	---	---	---	---
37C	Power Fuse Block Quantity	---	---	---	---	---	---	---	---	---	---	---	---	---	---	---	---
37D	Power Fuse Block Quantity	---	---	---	---	---	---	---	---	---	---	---	---	---	---	---	---
38A	Power Fuse (2 Pack) (40 Amp) Quantity	R02.03.031.02 3	---	R02.03.031.02 3	---	---	---	R02.03.031.02 3	---	---	---	---	---	---	---	---	---
38B	Power Fuse (2 Pack) Quantity	---	---	---	---	---	---	---	---	---	---	---	---	---	---	---	---
38C	Power Fuse (2 Pack) Quantity	---	---	---	---	---	---	---	---	---	---	---	---	---	---	---	---
39	Control Fuse Block	02.03.022.00	---	02.03.022.00	02.03.022.00	---	02.03.022.00	02.03.022.00	---	02.03.022.00	02.03.022.00	---	02.03.022.00	02.03.004.00	---	02.03.004.00	02.03.004.00
40	Control Fuse (2 Pack)	R02.03.014.02	---	R02.03.014.02	R02.03.014.02	---	R02.03.014.02	R02.03.014.02	---	R02.03.014.02	R02.03.013.02	---	R02.03.013.02	R02.03.001.02	---	R02.03.001.02	R02.03.001.02
41A	Tube, Inlet Water	03.30.004.00	---	03.30.004.00	03.30.004.00	---	03.30.004.00	03.30.004.00	---	03.30.004.00	03.30.004.00	---	03.30.004.00	03.30.004.00	---	03.30.004.00	03.30.004.00
41B	Tube, Inlet Water	---	---	---	---	---	---	---	---	---	---	---	---	---	---	---	---
42A	Nipple, Outlet Water	03.11.008.00	---	03.11.008.00	03.11.008.00	---	03.11.008.00	03.11.008.00	---	03.11.008.00	03.11.008.00	---	03.11.008.00	03.11.008.00	---	03.11.008.00	03.11.008.00
42B	Tube, Outlet Water	---	---	---	---	---	---	---	---	---	---	---	---	---	---	---	---
	Electrical Diagram	HC1-2469	---	HC1-2469	HC1-2465	---	HC1-2465	HC1-2469	---	HC1-2469	HC1-2465	---	HC1-2465	HC1-390	---	HC1-390	HC1-390

Shaded area reflects **export models only**.

PARTS SPECIFIC TO MODEL C-18

ITEM	DESCRIPTION	240V Three Phase	380V Three Phase	415V Three Phase	480V Three Phase	600V Three Phase	380-400V CE 3 Wire	400-415V CE 3 Wire	380-400V CE 4 Wire	400-415V CE 4 Wire
28	Tank with Gaskets	R01.02.003.00	R01.02.003.00	R01.02.003.00	R01.02.003.00	R01.02.003.00	R01.02.003.00	R01.02.003.00	R01.02.003.00	R01.02.003.00
29	Heating Element with Gasket Quantity	R02.04.603.00 3	R02.04.601.00 3	R02.04.603.00 3	R02.04.605.00 3	R02.04.604.00 3	R02.04.603.00 3	R02.04.603.00 3	R02.04.603.00 3	R02.04.603.00 3
30	Contactor Quantity	02.01.018.00 1	02.01.016.00 1	02.01.016.00 1	02.01.016.00 1	02.01.016.00 1	02.01.016.00 2	02.01.016.00 2	02.01.016.00 2	02.01.016.00 2
31	Thermostat Control	02.16.024.00	02.16.024.00	02.16.024.00	02.16.024.00	02.16.024.00	02.16.024.00	02.16.024.00	02.16.024.00	02.16.024.00
32	Low Water Cut Off Board	02.01.001.00	02.01.001.00	02.01.001.00	02.01.001.00	02.01.001.00	02.01.164.00	02.01.164.00	02.01.164.00	02.01.164.00
33	Transformer, Step Down	---	R02.17.003.00	R02.17.002.00	R02.17.002.00	02.17.009.00	02.17.043.00	02.17.043.00	---	---
34	Terminal Block	R02.15.046.00	---	---	---	---	R02.15.035.00	R02.15.035.00	02.15.044.00	02.15.044.00
35	Indicator Light, Red	02.19.151.00	02.19.151.00	02.19.151.00	02.19.151.00	02.19.151.00	---	---	---	---
36	Indicator Light, Green	02.19.150.00	02.19.150.00	02.19.150.00	02.19.150.00	02.19.150.00	02.19.150.00	02.19.150.00	02.19.150.00	02.19.150.00
37A	Power Fuse Block Quantity	---	---	---	---	---	---	---	---	---
37B	Power Fuse Block Quantity	---	---	---	---	---	---	---	---	---
37C	Power Fuse Block Quantity	---	---	---	---	---	---	---	---	---
37D	Power Fuse Block Quantity	---	---	---	---	---	---	---	---	---
38A	Power Fuse (2 Pack) Quantity	---	---	---	---	---	---	---	---	---
38B	Power Fuse (2 Pack) Quantity	---	---	---	---	---	---	---	---	---
38C	Power Fuse (2 Pack) Quantity	---	---	---	---	---	---	---	---	---
39	Control Fuse Block	02.03.004.00	---	---	---	---	---	---	---	---
40	Control Fuse (2 Pack)	R02.03.001.02	R02.03.005.02	R02.03.005.02	R02.03.005.02	R02.03.021.02	---	---	---	---
41A	Tube, Inlet Water	03.30.004.00	03.30.004.00	03.30.004.00	03.30.004.00	03.30.004.00	03.30.004.00	03.30.004.00	03.30.004.00	03.30.004.00
41B	Tube, Inlet Water	---	---	---	---	---	---	---	---	---
42A	Nipple, Outlet Water	03.11.008.00	03.11.008.00	03.11.008.00	03.11.008.00	03.11.008.00	03.11.008.00	03.11.008.00	03.11.008.00	03.11.008.00
42B	Tube, Outlet Water	---	---	---	---	---	---	---	---	---
42B	Electrical Diagram	HC1-390	HC1-396	HC1-396	HC1-395	HC1-396	HS1-4931	HS1-4931	HS1-4718	HS1-4718

Shaded area reflects export models only.

PARTS SPECIFIC TO MODEL C-24

ITEM	DESCRIPTION	208V		240V		480V		208V		240V		480V		208V		240V	
		Single Phase	Three Phase	Single Phase	Three Phase	Single Phase	Three Phase	Single Phase	Three Phase	Single Phase	Three Phase	Single Phase	Three Phase	Single Phase	Three Phase	Single Phase	Three Phase
28	Tank with Gaskets	R01.02.031.00	R01.02.031.00	R01.02.031.00	R01.02.031.00	---	---	---	---	---	---	---	---	R01.02.031.00	R01.02.031.00	R01.02.031.00	R01.02.031.00
29	Heating Element with Gasket Quantity	R02.04.400.00 6	R02.04.400.00 6	R02.04.401.00 6	R02.04.401.00 6	---	---	---	---	---	---	---	---	R02.04.404.00 6	R02.04.400.00 6	R02.04.401.00 6	R02.04.401.00 6
30	Contactor Quantity	02.01.015.00 2	02.01.015.00 2	02.01.015.00 2	02.01.015.00 2	---	---	---	---	---	---	---	---	02.01.015.00 2	02.01.016.00 2	02.01.016.00 2	02.01.016.00 2
31	Thermostat Control	02.16.003.00	02.16.003.00	02.16.003.00	02.16.003.00	---	---	---	---	---	---	---	---	02.16.003.00	02.16.003.00	02.16.003.00	02.16.003.00
32	Low Water Cut Off Board	02.01.006.00	02.01.006.00	02.01.006.00	02.01.006.00	---	---	---	---	---	---	---	---	02.01.006.00	02.01.001.00	02.01.001.00	02.01.001.00
33	Transformer, Step Down	02.17.004.00	02.17.004.00	02.17.004.00	02.17.004.00	---	---	---	---	---	---	---	---	02.17.005.00	---	---	---
34	Terminal Block	---	---	---	---	---	---	---	---	---	---	---	---	R02.15.046.00	02.15.021.00	02.15.021.00	02.15.021.00
35	Indicator Light, Red	02.19.154.00	02.19.154.00	02.19.154.00	02.19.154.00	---	---	---	---	---	---	---	---	02.19.154.00	02.19.151.00	02.19.151.00	02.19.151.00
36	Indicator Light, Green	---	---	---	---	---	---	---	---	---	---	---	---	---	02.19.150.00	02.19.150.00	02.19.150.00
37A	Power Fuse Block Quantity	02.41.010.00 2	---	02.41.010.00 2	---	---	---	---	---	---	---	---	---	---	---	---	---
37B	Power Fuse Block Quantity	---	02.41.001.00 1	---	02.41.001.00 1	---	---	---	---	---	---	---	---	---	---	---	---
37C	Power Fuse Block Quantity	---	02.41.005.00 1	---	02.41.005.00 1	---	---	---	---	---	---	---	---	---	---	---	---
37D	Power Fuse Block Quantity	---	---	---	---	---	---	---	---	---	---	---	---	---	---	---	---
38A	Power Fuse (2 Pack) (60 Amp) Quantity	R02.03.033.02 3	---	R02.03.033.02 3	---	---	---	---	---	---	---	---	---	---	---	---	---
38B	Power Fuse (2 Pack) (50 Amp) Quantity	---	R02.03.032.02 3	---	R02.03.032.02 3	---	---	---	---	---	---	---	---	---	---	---	---
38C	Power Fuse (2 Pack) Quantity	---	---	---	---	---	---	---	---	---	---	---	---	---	---	---	---
39	Control Fuse Block	02.03.022.00	02.03.022.00	02.03.022.00	02.03.022.00	---	---	---	---	---	---	---	---	02.03.023.00	02.03.004.00	02.03.004.00	02.03.004.00
40	Control Fuse (2 Pack)	R02.03.014.02	R02.03.014.02	R02.03.014.02	R02.03.014.02	---	---	---	---	---	---	---	---	R02.03.013.02	R02.03.001.02	R02.03.001.02	R02.03.001.02
41A	Tube, Inlet Water	---	---	---	---	---	---	---	---	---	---	---	---	---	---	---	---
41B	Tube, Inlet Water	03.30.007.00	03.30.007.00	03.30.007.00	03.30.007.00	---	---	---	---	---	---	---	---	03.30.007.00	03.30.007.00	03.30.007.00	03.30.007.00
42A	Nipple, Outlet Water	---	---	---	---	---	---	---	---	---	---	---	---	---	---	---	---
42B	Tube, Outlet Water Electrical Diagram	03.30.009.00 HC1-2471	03.30.009.00 HC1-2481	03.30.009.00 HC1-2471	03.30.009.00 HC1-2481	---	---	---	---	---	---	---	---	03.30.009.00 HC1-2475	03.30.009.00 HC1-1183	03.30.009.00 HC1-1183	03.30.009.00 HC1-1183

Shaded area reflects **export models only**.

PARTS SPECIFIC TO MODEL C-24

ITEM	DESCRIPTION	240V Three Phase	380V Three Phase	415V Three Phase	480V Three Phase	600V Three Phase	380-400V CE 3 Wire	400-415V CE 3 Wire	380-400V CE 4 Wire	400-415V CE 4 Wire
28	Tank with Gaskets	R01.02.031.00	R01.02.031.00	R01.02.031.00	R01.02.031.00	R01.02.031.00	R01.02.031.00	R01.02.031.00	R01.02.031.00	R01.02.031.00
29	Heating Element with Gasket Quantity	R02.04.401.00 6	R02.04.501.00 6	R02.04.401.00 6	R02.04.404.00 6	R02.04.402.00 6	R02.04.401.00 6	R02.04.401.00 6	R02.04.401.00 6	R02.04.401.00 6
30	Contactor Quantity	02.01.016.00 2	02.01.016.00 2	02.01.016.00 2	02.01.016.00 2	02.01.016.00 2	02.01.016.00 2	02.01.016.00 2	02.01.016.00 2	02.01.016.00 2
31	Thermostat Control	02.16.003.00	02.16.003.00	02.16.003.00	02.16.003.00	02.16.003.00	02.16.003.00	02.16.003.00	02.16.003.00	02.16.003.00
32	Low Water Cut Off Board	02.01.001.00	02.01.001.00	02.01.001.00	02.01.001.00	02.01.001.00	02.01.164.00	02.01.164.00	02.01.164.00	02.01.164.00
33	Transformer, Step Down	---	R02.17.003.00	R02.17.002.00	R02.17.002.00	02.17.009.00	02.17.043.00	02.17.043.00	---	---
34	Terminal Block	02.15.021.00	R02.15.046.00	R02.15.046.00	02.15.021.00	R02.15.046.00	R02.15.035.00	R02.15.035.00	02.15.044.00	02.15.044.00
35	Indicator Light, Red	02.19.151.00	02.19.151.00	02.19.151.00	02.19.151.00	02.19.151.00	---	---	---	---
36	Indicator Light, Green	02.19.150.00	02.19.150.00	02.19.150.00	02.19.150.00	02.19.150.00	02.19.150.00	02.19.150.00	02.19.150.00	02.19.150.00
37A	Power Fuse Block Quantity	---	---	---	---	---	---	---	---	---
37B	Power Fuse Block Quantity	---	---	---	---	---	---	---	---	---
37C	Power Fuse Block Quantity	---	---	---	---	---	---	---	---	---
37D	Power Fuse Block Quantity	---	---	---	---	---	---	---	---	---
38A	Power Fuse (2 Pack) Quantity	---	---	---	---	---	---	---	---	---
38B	Power Fuse (2 Pack) Quantity	---	---	---	---	---	---	---	---	---
38C	Power Fuse (2 Pack) Quantity	---	---	---	---	---	---	---	---	---
39	Control Fuse Block	02.03.004.00	---	---	---	02.03.016.00	02.03.016.00	02.03.016.00	---	---
40	Control Fuse (2 Pack)	R02.03.001.02	R02.03.005.02	R02.03.005.02	R02.03.005.02	R02.03.021.02	R02.03.021.00	R02.03.021.02	---	---
41A	Tube, Inlet Water	---	---	---	---	---	---	---	---	---
41B	Tube, Inlet Water	03.30.007.00	03.30.007.00	03.30.007.00	03.30.007.00	03.30.007.00	03.30.007.00	03.30.007.00	03.30.007.00	03.30.007.00
42A	Nipple, Outlet Water	---	---	---	---	---	---	---	---	---
42B	Tube, Outlet Water	03.30.009.00	03.30.009.00	03.30.009.00	03.30.009.00	03.30.009.00	03.30.009.00	03.30.009.00	03.30.009.00	03.30.009.00
42B	Electrical Diagram	HC1-1183	HS1-3887	HS1-3887	HC1-2177	HS1-3887	HS1-4932	HS1-4932	HS1-4918	HS1-4918

Shaded area reflects **export models only**.

PARTS SPECIFIC TO MODEL C-27

ITEM	DESCRIPTION	208V		240V		480V		208V		240V		480V		208V		240V	
		Single Phase	Three Phase	Single Phase	Three Phase	Single Phase	Three Phase	Single Phase	Three Phase	Single Phase	Three Phase	Single Phase	Three Phase	Single Phase	Three Phase	Single Phase	Three Phase
28	Tank with Gaskets	R01.02.031.00	R01.02.031.00	R01.02.031.00	R01.02.031.00	---	---	---	---	---	---	---	---	R01.02.031.00	R01.02.031.00	R01.02.031.00	R01.02.031.00
29	Heating Element with Gasket Quantity	R02.04.450.00 6	R02.04.450.00 6	R02.04.451.00 6	R02.04.451.00 6	---	---	---	---	---	---	---	---	R02.04.453.00 6	R02.04.450.00 6	R02.04.451.00 6	R02.04.451.00 6
30	Contactor Quantity	02.01.015.00 2	02.01.015.00 2	02.01.015.00 2	02.01.015.00 2	---	---	---	---	---	---	---	---	02.01.015.00 2	02.01.016.00 2	02.01.016.00 2	02.01.016.00 2
31	Thermostat Control	02.16.003.00	02.16.003.00	02.16.003.00	02.16.003.00	---	---	---	---	---	---	---	---	02.16.003.00	02.16.003.00	02.16.003.00	02.16.003.00
32	Low Water Cut Off Board	02.01.006.00	02.01.006.00	02.01.006.00	02.01.006.00	---	---	---	---	---	---	---	---	02.01.006.00	02.01.001.00	02.01.001.00	02.01.001.00
33	Transformer, Step Down	02.17.004.00	02.17.004.00	02.17.004.00	02.17.004.00	---	---	---	---	---	---	---	---	02.17.005.00	---	---	---
34	Terminal Block	---	---	---	---	---	---	---	---	---	---	---	---	---	---	---	---
35	Indicator Light, Red	02.19.154.00	02.19.154.00	02.19.154.00	02.19.154.00	---	---	---	---	---	---	---	---	R02.15.046.00	02.15.021.00	02.15.021.00	02.15.021.00
36	Indicator Light, Green	---	---	---	---	---	---	---	---	---	---	---	---	02.19.154.00	02.19.151.00	02.19.151.00	02.19.151.00
37A	Power Fuse Block Quantity	02.41.010.00 2	---	02.41.010.00 2	---	---	---	---	---	---	---	---	---	---	---	---	---
37B	Power Fuse Block Quantity	---	02.41.001.00 1	---	02.41.001.00 1	---	---	---	---	---	---	---	---	---	---	---	---
37C	Power Fuse Block Quantity	---	02.41.005.00 1	---	02.41.005.00 1	---	---	---	---	---	---	---	---	---	---	---	---
37D	Power Fuse Block Quantity	---	---	---	---	---	---	---	---	---	---	---	---	---	---	---	---
38A	Power Fuse (2 Pack) (60 Amp) Quantity	R02.03.033.02 3	---	R02.03.033.02 3	---	---	---	---	---	---	---	---	---	---	---	---	---
38B	Power Fuse (2 Pack) (50 Amp) Quantity	---	R02.03.032.02 3	---	R02.03.032.02 3	---	---	---	---	---	---	---	---	---	---	---	---
38C	Power Fuse (2 Pack) Quantity	---	---	---	---	---	---	---	---	---	---	---	---	---	---	---	---
39	Control Fuse Block	02.03.022.00	02.03.022.00	02.03.022.00	02.03.022.00	---	---	---	---	---	---	---	---	02.03.023.00	02.03.004.00	02.03.004.00	02.03.004.00
40	Control Fuse (2 Pack)	R02.03.014.02	R02.03.014.02	R02.03.014.02	R02.03.014.02	---	---	---	---	---	---	---	---	R02.03.013.02	R02.03.001.02	R02.03.001.02	R02.03.001.02
41A	Tube, Inlet Water	---	---	---	---	---	---	---	---	---	---	---	---	---	---	---	---
41B	Tube, Inlet Water	03.30.007.00	03.30.007.00	03.30.007.00	03.30.007.00	---	---	---	---	---	---	---	---	03.30.007.00	03.30.007.00	03.30.007.00	03.30.007.00
42A	Nipple, Outlet Water	---	---	---	---	---	---	---	---	---	---	---	---	---	---	---	---
42B	Tube, Outlet Water Electrical Diagram	03.30.009.00 HC1-2471	03.30.009.00 HC1-2481	03.30.009.00 HC1-2471	03.30.009.00 HC1-2481	---	---	---	---	---	---	---	---	03.30.009.00 HC1-2475	03.30.009.00 HC1-1183	03.30.009.00 HC1-1183	03.30.009.00 HC1-1183

Shaded area reflects **export models only**.

PARTS SPECIFIC TO MODEL C-27

ITEM	DESCRIPTION	240V Three Phase	380V Three Phase	415V Three Phase	480V Three Phase	600V Three Phase	380-400V CE 3 Wire	400-415V CE 3 Wire	380-400V CE 4 Wire	400-415V CE 4 Wire
28	Tank with Gaskets	R01.02.031.00	R01.02.031.00	R01.02.031.00	R01.02.031.00	R01.02.031.00	R01.02.031.00	R01.02.031.00	R01.02.031.00	R01.02.031.00
29	Heating Element with Gasket Quantity	R02.04.451.00 6	R02.04.501.00 6	R02.04.451.00 6	R02.04.453.00 6	R02.04.452.00 6	R02.04.451.00 6	R02.04.451.00 6	R02.04.451.00 6	R02.04.451.00 6
30	Contactor Quantity	02.01.016.00 2	02.01.016.00 2	02.01.016.00 2	02.01.016.00 2	02.01.016.00 2	02.01.016.00 2	02.01.016.00 2	02.01.016.00 2	02.01.016.00 2
31	Thermostat Control	02.16.003.00	02.16.003.00	02.16.003.00	02.16.003.00	02.16.003.00	02.16.003.00	02.16.003.00	02.16.003.00	02.16.003.00
32	Low Water Cut Off Board	02.01.001.00	02.01.001.00	02.01.001.00	02.01.001.00	02.01.001.00	02.01.164.00	02.01.164.00	02.01.164.00	02.01.164.00
33	Transformer, Step Down	---	R02.17.003.00	R02.17.002.00	R02.17.002.00	R02.17.009.00	02.17.043.00	02.17.043.00	---	---
34	Terminal Block	02.15.021.00	R02.15.046.00	R02.15.046.00	02.15.021.00	R02.15.046.00	R02.15.035.00	R02.15.035.00	02.15.044.00	02.15.044.00
35	Indicator Light, Red	02.19.151.00	02.19.151.00	02.19.151.00	02.19.151.00	02.19.151.00	---	---	---	---
36	Indicator Light, Green	02.19.150.00	02.19.150.00	02.19.150.00	02.19.150.00	02.19.150.00	02.19.150.00	02.19.150.00	02.19.150.00	02.19.150.00
37A	Power Fuse Block Quantity	---	---	---	---	---	---	---	---	---
37B	Power Fuse Block Quantity	---	---	---	---	---	---	---	---	---
37C	Power Fuse Block Quantity	---	---	---	---	---	---	---	---	---
37D	Power Fuse Block Quantity	---	---	---	---	---	---	---	---	---
38A	Power Fuse (2 Pack) Quantity	---	---	---	---	---	---	---	---	---
38B	Power Fuse (2 Pack) Quantity	---	---	---	---	---	---	---	---	---
38C	Power Fuse (2 Pack) Quantity	---	---	---	---	---	---	---	---	---
39	Control Fuse Block	02.03.004.00	---	---	---	02.03.016.00	02.03.016.00	02.03.016.00	02.03.016.00	02.03.016.00
40	Control Fuse (2 Pack)	R02.03.001.02	R02.03.005.02	R02.03.005.02	R02.03.005.02	R02.03.021.02	R02.03.021.00	R02.03.021.02	R02.03.021.02	R02.03.021.00
41A	Tube, Inlet Water	---	---	---	---	---	---	---	---	---
41B	Tube, Inlet Water	03.30.007.00	03.30.007.00	03.30.007.00	03.30.007.00	03.30.007.00	03.30.007.00	03.30.007.00	03.30.007.00	03.30.007.00
42A	Nipple, Outlet Water	---	---	---	---	---	---	---	---	---
42B	Tube, Outlet Water	03.30.009.00	03.30.009.00	03.30.009.00	03.30.009.00	03.30.009.00	03.30.009.00	03.30.009.00	03.30.009.00	03.30.009.00
42B	Electrical Diagram	HC1-1183	HS1-3887	HS1-3887	HC1-2177	HS1-3887	HS1-4932	HS1-4932	HS1-4918	HS1-4918

Shaded area reflects export models only.

PARTS SPECIFIC TO MODEL C-30

ITEM	DESCRIPTION	208V		240V		480V		208V		240V		480V	
		Single Phase	Three Phase	Single Phase	Three Phase	Single Phase	Three Phase	Single Phase	Three Phase	Single Phase	Three Phase	Single Phase	Three Phase
28	Tank with Gaskets	R01.02.031.00	R01.02.031.00	R01.02.031.00	R01.02.031.00	---	---	R01.02.031.00	R01.02.031.00	R01.02.031.00	R01.02.031.00	R01.02.031.00	R01.02.031.00
29	Heating Element with Gasket Quantity	R01.04.500.00 6	R02.04.500.00 6	R02.04.501.00 6	R02.04.501.00 6	---	---	R02.04.502.00 6	R02.04.500.00 6	R01.02.500.00 6	R02.04.500.00 6	R02.04.501.00 6	R02.04.501.00 6
30	Contactor Quantity	02.01.015.00 2	02.01.015.00 2	02.01.015.00 2	02.01.015.00 2	---	---	02.01.015.00 2	02.01.016.00 2	02.01.016.00 2	02.01.016.00 2	02.01.016.00 2	02.01.016.00 2
31	Thermostat Control	02.16.003.00	02.16.003.00	02.16.003.00	02.16.003.00	---	---	02.16.003.00	02.16.003.00	02.16.003.00	02.16.003.00	02.16.003.00	02.16.003.00
32	Low Water Cut Off Board	02.01.006.00	02.01.006.00	02.01.006.00	02.01.006.00	---	---	02.01.006.00	02.01.006.00	02.01.001.00	02.01.001.00	02.01.001.00	02.01.001.00
33	Transformer, Step Down	02.17.004.00	02.17.004.00	02.17.004.00	02.17.004.00	---	---	02.17.005.00	---	---	---	---	---
34	Terminal Block	---	---	---	---	---	---	R02.15.046.00	02.15.021.00	02.15.021.00	02.15.021.00	02.15.021.00	02.15.021.00
35	Indicator Light, Red	02.19.154.00	02.19.154.00	02.19.154.00	02.19.154.00	---	---	02.19.154.00	02.19.151.00	02.19.151.00	02.19.151.00	02.19.151.00	02.19.151.00
36	Indicator Light, Green	---	---	---	---	---	---	---	02.19.150.00	02.19.150.00	02.19.150.00	02.19.150.00	02.19.150.00
37A	Power Fuse Block Quantity	02.41.010.00 2	---	02.41.010.00 2	---	---	---	---	---	---	---	---	---
37B	Power Fuse Block Quantity	---	02.41.001.00 1	---	02.41.001.00 1	---	---	---	---	---	---	---	---
37C	Power Fuse Block Quantity	---	02.41.005.00 1	---	02.41.005.00 1	---	---	---	---	---	---	---	---
37D	Power Fuse Block Quantity	---	---	---	---	---	---	---	---	---	---	---	---
38A	Power Fuse (2 Pack) (60 Amp) Quantity	R02.03.033.02 3	R02.03.033.02 3	R02.03.033.02 3	R02.03.033.02 3	---	---	---	---	---	---	---	---
38B	Power Fuse (2 Pack) Quantity	---	---	---	---	---	---	---	---	---	---	---	---
38C	Power Fuse (2 Pack) Quantity	---	---	---	---	---	---	---	---	---	---	---	---
39	Control Fuse Block	02.03.022.00	02.03.022.00	02.03.002.00	02.03.022.00	---	---	02.03.023.00	02.03.004.00	02.03.004.00	02.03.004.00	02.03.004.00	02.03.004.00
40	Control Fuse (2 Pack)	R02.03.014.02	R02.03.014.02	R02.03.014.02	R02.03.014.02	---	---	R02.03.013.02	R02.03.001.02	R02.03.001.02	R02.03.001.02	R02.03.001.02	R02.03.001.02
41A	Tube, Inlet Water	---	---	---	---	---	---	---	---	---	---	---	---
41B	Tube, Inlet Water	03.30.007.00	03.30.007.00	03.30.007.00	03.30.007.00	---	---	03.30.007.00	03.30.007.00	03.30.007.00	03.30.007.00	03.30.007.00	03.30.007.00
42A	Nipple, Outlet Water	---	---	---	---	---	---	---	---	---	---	---	---
42B	Tube, Outlet Water Electrical Diagram	03.30.009.00 HC1-2471	03.30.009.00 HC1-2481	03.30.009.00 HC1-2471	03.30.009.00 HC1-2481	---	---	03.30.009.00 HC1-2475	03.30.009.00 HC1-1183	03.30.009.00 HC1-1183	03.30.009.00 HC1-1183	03.30.009.00 HC1-1183	03.30.009.00 HC1-1183

Shaded area reflects **export models only**.

PARTS SPECIFIC TO MODEL C-30

ITEM	DESCRIPTION	240V Three Phase	380V Three Phase	415V Three Phase	480V Three Phase	600V Three Phase	380-400V CE 3 Wire	400-415V CE 3 Wire	380-400V CE 4 Wire	400-415V CE 4 Wire
28	Tank with Gaskets	R01.02.031.00	R01.02.031.00	R01.02.031.00	R01.02.031.00	R01.02.031.00	R01.02.031.00	R01.02.031.00	R01.02.031.00	R01.02.031.00
29	Heating Element with Gasket Quantity	R02.04.501.00 6	R02.04.611.00 6	R02.04.501.00 6	R02.04.502.00 6	R02.04.510.00 6	R02.04.501.00 6	R02.04.501.00 6	R02.04.501.00 6	R02.04.501.00 6
30	Contactor Quantity	02.01.016.00 2	02.01.016.00 2	02.01.016.00 2	02.01.016.00 2	02.01.016.00 2	02.01.016.00 2	02.01.016.00 2	02.01.016.00 2	02.01.016.00 2
31	Thermostat Control	02.16.003.00	02.16.003.00	02.16.003.00	02.16.003.00	02.16.003.00	02.16.003.00	02.16.003.00	02.16.003.00	02.16.003.00
32	Low Water Cut Off Board	02.01.001.00	02.01.001.00	02.01.001.00	02.01.001.00	02.01.001.00	02.01.164.00	02.01.164.00	02.01.164.00	02.01.164.00
33	Transformer, Step Down	---	R02.17.003.00	R02.17.002.00	R02.17.002.00	02.17.009.00	02.17.043.00	02.17.043.00	---	---
34	Terminal Block	02.15.021.00	R02.15.046.00	R02.15.046.00	02.15.021.00	R02.15.046.00	R02.15.035.00	R02.15.035.00	02.15.044.00	02.15.044.00
35	Indicator Light, Red	02.19.151.00	02.19.151.00	02.19.151.00	02.19.151.00	02.19.151.00	---	---	---	---
36	Indicator Light, Green	02.19.150.00	02.19.150.00	02.19.150.00	02.19.150.00	02.19.150.00	02.19.150.00	02.19.150.00	02.19.150.00	02.19.150.00
37A	Power Fuse Block Quantity	---	---	---	---	---	---	---	---	---
37B	Power Fuse Block Quantity	---	---	---	---	---	---	---	---	---
37C	Power Fuse Block Quantity	---	---	---	---	---	---	---	---	---
37D	Power Fuse Block Quantity	---	---	---	---	---	---	---	---	---
38A	Power Fuse (2 Pack) Quantity	---	---	---	---	---	---	---	---	---
38B	Power Fuse (2 Pack) Quantity	---	---	---	---	---	---	---	---	---
38C	Power Fuse (2 Pack) Quantity	---	---	---	---	---	---	---	---	---
39	Control Fuse Block	02.03.004.00	---	---	---	02.03.016.00	02.03.016.00	02.03.016.00	---	---
40	Control Fuse (2 Pack)	R02.03.001.02	R02.03.005.02	R02.03.005.02	R02.03.005.02	R02.03.021.02	R02.03.021.00	R02.03.021.02	---	---
41A	Tube, Inlet Water	---	---	---	---	---	---	---	---	---
41B	Tube, Inlet Water	03.30.007.00	03.30.007.00	03.30.007.00	03.30.007.00	03.30.007.00	03.30.007.00	03.30.007.00	03.30.007.00	03.30.007.00
42A	Nipple, Outlet Water	---	---	---	---	---	---	---	---	---
42B	Tube, Outlet Water	03.30.009.00	03.30.009.00	03.30.009.00	03.30.009.00	03.30.009.00	03.30.009.00	03.30.009.00	03.30.009.00	03.30.009.00
42B	Electrical Diagram	HC1-1183	HS1-3887	HS1-3887	HC1-2177	HS1-3887	HS1-4932	HS1-4932	HS1-4918	HS1-4918

Shaded area reflects export models only.

PARTS SPECIFIC TO MODEL C-36

ITEM	DESCRIPTION	208V		240V		480V		208V		240V		480V	
		Single Phase	Three Phase	Single Phase	Three Phase	Single Phase	Three Phase	Single Phase	Three Phase	Single Phase	Three Phase	Single Phase	Three Phase
28	Tank with Gaskets	R01.02.031.00	R01.02.031.00	R01.02.031.00	R01.02.031.00	---	R01.02.031.00	---	R01.02.031.00	---	R01.02.031.00	---	R01.02.031.00
29	Heating Element with Gasket Quantity	R02.04.610.00 6	R02.04.610.00 6	R02.04.611.00 6	R02.04.611.00 6	---	R02.04.613.00 6	---	R02.04.613.00 6	---	R02.04.611.00 6	---	R02.04.611.00 6
30	Contactors Quantity	02.01.017.00 3	02.01.017.00 3	02.01.017.00 3	02.01.015.00 2	---	02.01.015.00 2	---	02.01.015.00 2	---	02.01.018.00 3	---	02.01.016.00 2
31	Thermostat Control	02.16.003.00	02.16.003.00	02.16.003.00	02.16.003.00	---	02.16.003.00	---	02.16.003.00	---	02.16.003.00	---	02.16.003.00
32	Low Water Cut Off Board	02.01.006.00	02.01.006.00	02.01.006.00	02.01.006.00	---	02.01.006.00	---	02.01.006.00	---	02.01.006.00	---	02.01.001.00
33	Transformer, Step Down	02.17.004.00	02.17.004.00	02.17.004.00	02.17.004.00	---	02.17.005.00	---	02.17.005.00	---	---	---	---
34	Terminal Block	02.15.007.00	---	02.15.007.00	---	---	R02.15.046.00	---	R02.15.046.00	---	02.15.021.00	---	02.15.021.00
35	Indicator Light, Red	02.19.154.00	02.19.154.00	02.19.154.00	02.19.154.00	---	02.19.154.00	---	02.19.154.00	---	02.19.151.00	---	02.19.151.00
36	Indicator Light, Green	---	---	---	---	---	---	---	---	---	02.19.150.00	---	02.19.150.00
37A	Power Fuse Block Quantity	02.41.010.00 4	---	02.41.010.00 4	---	---	---	---	---	---	---	---	---
37B	Power Fuse Block Quantity	---	02.41.015.00 3	---	---	---	---	---	---	---	---	---	---
37C	Power Fuse Block Quantity	---	---	---	02.41.001.00 1	---	---	---	02.41.001.00 1	---	---	---	---
37D	Power Fuse Block Quantity	---	---	---	02.41.005.00 1	---	---	---	02.41.005.00 1	---	---	---	---
38A	Power Fuse (2 Pack) (40 Amp) Quantity	R02.03.031.02 6	R02.03.031.02 6	R02.03.031.02 6	R02.03.031.02	---	---	---	---	---	---	---	---
38B	Power Fuse (2 Pack) (60 Amp) Quantity	---	---	---	R02.03.033.02 3	---	---	---	---	---	---	---	---
38C	Power Fuse (2 Pack) Quantity	---	---	---	---	---	---	---	---	---	---	---	---
39	Control Fuse Block	02.03.022.00	02.03.022.00	02.03.022.00	02.03.022.00	---	02.03.023.00	---	02.03.023.00	---	02.03.004.00	---	02.03.004.00
40	Control Fuse (2 Pack)	R02.03.014.02	R02.03.014.02	R02.03.014.02	R02.03.014.02	---	R02.03.013.02	---	R02.03.013.02	---	R02.03.001.02	---	R02.03.001.02
41A	Tube, Inlet Water	---	---	---	---	---	---	---	---	---	---	---	---
41B	Tube, Inlet Water	03.30.007.00	03.30.007.00	03.30.007.00	03.30.007.00	---	03.30.007.00	---	03.30.007.00	---	03.30.007.00	---	03.30.007.00
42A	Nipple, Outlet Water	---	---	---	---	---	---	---	---	---	---	---	---
42B	Tube, Outlet Water Electrical Diagram	03.30.009.00 HC1-2477	03.30.009.00 HC1-2479	03.30.009.00 HC1-2477	03.30.009.00 HC1-2481	---	03.30.009.00 HC1-2475	---	03.30.009.00 HC1-2475	---	03.30.009.00 HC1-1181	---	03.30.009.00 HC1-1183

Shaded area reflects export models only.

PARTS SPECIFIC TO MODEL C-36

ITEM	DESCRIPTION	240V Three Phase	380V Three Phase	415V Three Phase	480V Three Phase	600V Three Phase	380-400V CE 3 Wire	400-415V CE 3 Wire	380-400V CE 4 Wire	400-415V CE 4 Wire
28	Tank with Gaskets	R01.02.031.00	R01.02.031.00	R01.02.031.00	R01.02.031.00	R01.02.031.00	---	---	---	---
29	Heating Element with Gasket Quantity 6	R02.04.611.00 6	R02.04.601.00 6	R02.04.611.00 6	R02.04.613.00 6	R02.04.612.00 6	---	---	---	---
30	Contactors Quantity 2	02.01.016.00 2	02.01.016.00 2	02.01.016.00 2	02.01.016.00 2	02.01.016.00 2	---	---	---	---
31	Thermostat Control	02.16.003.00	02.16.003.00	02.16.003.00	02.16.003.00	02.16.003.00	---	---	---	---
32	Low Water Cut Off Board	02.01.001.00	02.01.001.00	02.01.001.00	02.01.001.00	02.01.001.00	---	---	---	---
33	Transformer, Step Down	---	R02.17.003.00	R02.17.002.00	R02.17.002.00	R02.17.009.00	---	---	---	---
34	Terminal Block	02.15.021.00	R02.15.046.00	R02.15.046.00	02.15.021.00	R02.15.046.00	---	---	---	---
35	Indicator Light, Red	02.19.151.00	02.19.151.00	02.19.151.00	02.19.151.00	02.19.151.00	---	---	---	---
36	Indicator Light, Green	02.19.150.00	02.19.150.00	02.19.150.00	02.19.150.00	02.19.150.00	---	---	---	---
37A	Power Fuse Block Quantity	---	---	---	---	---	---	---	---	---
37B	Power Fuse Block Quantity	---	---	---	---	---	---	---	---	---
37C	Power Fuse Block Quantity	---	---	---	---	---	---	---	---	---
37D	Power Fuse Block Quantity	---	---	---	---	---	---	---	---	---
38A	Power Fuse (2 Pack) Quantity	---	---	---	---	---	---	---	---	---
38B	Power Fuse (2 Pack) Quantity	---	---	---	---	---	---	---	---	---
38C	Power Fuse (2 Pack) Quantity	---	---	---	---	---	---	---	---	---
39	Control Fuse Block	02.03.004.00	---	---	---	02.03.016.00	---	---	---	---
40	Control Fuse (2 Pack)	R02.03.001.02	R02.03.005.02	R02.03.005.02	R02.03.005.02	R02.03.021.02	---	---	---	---
41A	Tube, Inlet Water	---	---	---	---	---	---	---	---	---
41B	Tube, Inlet Water	03.30.007.00	03.30.007.00	03.30.007.00	03.30.007.00	03.30.007.00	---	---	---	---
42A	Nipple, Outlet Water	---	---	---	---	---	---	---	---	---
42B	Tube, Outlet Water	03.30.009.00	03.30.009.00	03.30.009.00	03.30.009.00	03.30.009.00	---	---	---	---
	Electrical Diagram	HC1-1183	HS1-3887	HS1-3887	HC1-2177	HS1-3887	---	---	---	---

Shaded area reflects export models only.

PARTS SPECIFIC TO MODEL C-39

ITEM	DESCRIPTION	208V		240V		480V		208V		240V		480V	
		Single Phase	Three Phase	Single Phase	Three Phase	Single Phase	Three Phase	Single Phase	Three Phase	Single Phase	Three Phase	Single Phase	Three Phase
28	Tank with Gaskets	R01.02.031.00	R01.02.031.00	R01.02.031.00	R01.02.031.00	---	R01.02.031.00	---	R01.02.031.00	---	R01.02.031.00	---	---
29	Heating Element with Gasket Quantity	R01.04.650.00 6	R02.04.650.00 6	R02.04.653.00 6	R02.04.653.00 6	---	R02.04.655.00 6	---	R02.04.655.00 6	---	R02.04.655.00 6	---	---
30	Contactor Quantity	02.01.017.00 3	02.01.017.00 3	02.01.017.00 3	02.01.015.00 2	---	02.01.015.00 2	---	02.01.015.00 2	---	02.01.015.00 2	---	---
31	Thermostat Control	02.16.003.00	02.16.003.00	02.16.003.00	02.16.003.00	---	02.16.003.00	---	02.16.003.00	---	02.16.003.00	---	---
32	Low Water Cut Off Board	02.01.006.00	02.01.006.00	02.01.006.00	02.01.006.00	---	02.01.006.00	---	02.01.006.00	---	02.01.006.00	---	---
33	Transformer, Step Down	02.17.004.00	02.17.004.00	02.17.004.00	02.17.004.00	---	02.17.004.00	---	02.17.004.00	---	02.17.004.00	---	---
34	Terminal Block	02.15.007.00	---	02.15.007.00	---	---	---	---	---	---	---	---	---
35	Indicator Light, Red	02.19.154.00	02.19.154.00	02.19.154.00	02.19.154.00	---	02.19.154.00	---	02.19.154.00	---	02.19.154.00	---	---
36	Indicator Light, Green	---	---	---	---	---	---	---	---	---	---	---	---
37A	Power Fuse Block Quantity	02.41.010.00 4	---	02.41.010.00 4	---	---	02.41.010.00 4	---	---	---	---	---	---
37B	Power Fuse Block Quantity	---	02.41.015.00 3	---	---	---	---	---	---	---	---	---	---
37C	Power Fuse Block Quantity	---	---	---	02.41.001.00 1	---	---	---	02.41.001.00 1	---	---	---	---
37D	Power Fuse Block Quantity	---	---	---	02.41.005.00 1	---	---	---	02.41.005.00 1	---	---	---	---
38A	Power Fuse (2 Pack) (40 Amp) Quantity	R02.03.031.02 6	R02.03.031.02 6	R02.03.031.02 6	R02.03.031.02	---	---	---	---	---	---	---	---
38B	Power Fuse (2 Pack) (60 Amp) Quantity	---	---	---	R02.03.033.02 3	---	---	---	---	---	---	---	---
38C	Power Fuse (2 Pack) Quantity	---	---	---	---	---	---	---	---	---	---	---	---
39	Control Fuse Block	02.03.002.00	02.03.022.00	02.03.022.00	02.03.022.00	---	02.03.022.00	---	02.03.022.00	---	02.03.022.00	---	---
40	Control Fuse (2 Pack)	R02.03.014.02	R02.03.014.02	R02.03.014.02	R02.03.014.02	---	R02.03.013.02	---	R02.03.013.02	---	R02.03.013.02	---	---
41A	Tube, Inlet Water	---	---	---	---	---	---	---	---	---	---	---	---
41B	Tube, Inlet Water	03.30.007.00	03.30.007.00	03.30.007.00	03.30.007.00	---	03.30.007.00	---	03.30.007.00	---	03.30.007.00	---	---
42A	Nipple, Outlet Water	---	---	---	---	---	---	---	---	---	---	---	---
42B	Tube, Outlet Water	03.30.009.00	03.30.009.00	03.30.009.00	03.30.009.00	---	03.30.009.00	---	03.30.009.00	---	03.30.009.00	---	---
	Electrical Diagram	HC1-2477	HC1-2479	HC1-2477	HC1-2481	---	HC1-2475	---	HC1-2475	---	HC1-2475	---	---

Shaded area reflects **export models only**.

PARTS SPECIFIC TO MODEL C-39

ITEM	DESCRIPTION	240V Three Phase	380V Three Phase	415V Three Phase	480V Three Phase	600V Three Phase	380-400V CE 3 Wire	400-415V CE 3 Wire	380-400V CE 4 Wire	400-415V CE 4 Wire
28	Tank with Gaskets	R01.02.031.00	R01.02.031.00	R01.02.031.00	R01.02.031.00	R01.02.031.00	---	---	---	---
29	Heating Element with Gasket Quantity 6	R02.04.653.00	R02.04.651.00	R02.04.653.00	R02.04.655.00	R02.04.654.00	---	---	---	---
30	Contactor Quantity 3	02.01.018.00	02.01.016.00	02.01.016.00	02.01.016.00	02.01.016.00	---	---	---	---
31	Thermostat Control	02.16.003.00	02.16.003.00	02.16.003.00	02.16.003.00	02.16.003.00	---	---	---	---
32	Low Water Cut Off Board	02.01.001.00	02.01.001.00	02.01.001.00	02.01.001.00	02.01.001.00	---	---	---	---
33	Transformer, Step Down	---	R02.17.003.00	R02.17.002.00	R02.17.002.00	02.17.009.00	---	---	---	---
34	Terminal Block	02.15.021.00	R02.15.046.00	R02.15.046.00	02.15.021.00	R02.15.046.00	---	---	---	---
35	Indicator Light, Red	02.19.151.00	02.19.151.00	02.19.151.00	02.19.151.00	02.19.151.00	---	---	---	---
36	Indicator Light, Green	02.19.150.00	02.19.150.00	02.19.150.00	02.19.150.00	02.19.150.00	---	---	---	---
37A	Power Fuse Block Quantity	---	---	---	---	---	---	---	---	---
37B	Power Fuse Block Quantity	---	---	---	---	---	---	---	---	---
37C	Power Fuse Block Quantity	---	---	---	---	---	---	---	---	---
37D	Power Fuse Block Quantity	---	---	---	---	---	---	---	---	---
38A	Power Fuse (2 Pack) Quantity	---	---	---	---	---	---	---	---	---
38B	Power Fuse (2 Pack) Quantity	---	---	---	---	---	---	---	---	---
38C	Power Fuse (2 Pack) Quantity	---	---	---	---	---	---	---	---	---
39	Control Fuse Block	02.03.004.00	---	---	---	02.03.016.00	---	---	---	---
40	Control Fuse (2 Pack)	R02.03.001.02	R02.03.005.02	R02.03.005.02	R02.03.005.02	R02.03.021.02	---	---	---	---
41A	Tube, Inlet Water	---	---	---	---	---	---	---	---	---
41B	Tube, Inlet Water	03.30.007.00	03.30.007.00	03.30.007.00	03.30.007.00	03.30.007.00	---	---	---	---
42A	Nipple, Outlet Water	---	---	---	---	---	---	---	---	---
42B	Tube, Outlet Water	03.30.009.00	03.30.009.00	03.30.009.00	03.30.009.00	03.30.009.00	---	---	---	---
	Electrical Diagram	HC1-1183	HS1-3887	HS1-3887	HC1-2177	HS1-3887	---	---	---	---

Shaded area reflects export models only.

PARTS SPECIFIC TO MODEL C-45

ITEM	DESCRIPTION	208V		240V		480V		208V		240V		480V	
		Single Phase	Three Phase	Single Phase	Three Phase	Single Phase	Three Phase	Single Phase	Three Phase	Single Phase	Three Phase	Single Phase	Three Phase
28	Tank with Gaskets	---	R01.02.031.00	R01.02.031.00	R01.02.031.00	---	R01.02.031.00	---	R01.02.031.00	---	R01.02.031.00	---	R01.02.031.00
29	Heating Element with Gasket Quantity	---	R02.04.700.00 6	R02.04.701.00 6	R02.04.701.00 6	---	R02.04.703.00 6	---	R02.04.700.00 6	---	R02.04.700.00 6	---	R02.04.700.00 6
30	Contactor Quantity	---	02.01.017.00 3	02.01.017.00 3	02.01.017.00 3	---	02.01.015.00 2	---	02.01.017.00 3	---	02.01.018.00 3	---	02.01.018.00 3
31	Thermostat Control	---	02.16.003.00	02.16.003.00	02.16.003.00	---	02.16.003.00	---	02.16.003.00	---	02.16.003.00	---	02.16.003.00
32	Low Water Cut Off Board	---	02.01.006.00	02.01.006.00	02.01.006.00	---	02.01.006.00	---	02.01.006.00	---	02.01.006.00	---	02.01.001.00
33	Transformer, Step Down	---	02.17.004.00	02.17.004.00	02.17.004.00	---	02.17.005.00	---	02.17.004.00	---	---	---	---
34	Terminal Block	---	---	02.15.007.00	---	---	02.15.021.00	---	02.15.007.00	---	02.15.021.00	---	02.15.021.00
35	Indicator Light, Red	---	02.19.154.00	02.19.154.00	02.19.154.00	---	02.19.154.00	---	02.19.154.00	---	02.19.151.00	---	02.19.151.00
36	Indicator Light, Green	---	---	---	---	---	---	---	---	---	02.19.150.00	---	02.19.150.00
37A	Power Fuse Block Quantity	---	02.41.015.00 3	---	02.41.015.00 3	---	---	---	02.41.015.00 3	---	---	---	---
37B	Power Fuse Block Quantity	---	---	02.41.010.00 4	---	---	---	---	02.41.010.00 4	---	---	---	---
37C	Power Fuse Block Quantity	---	---	---	---	---	02.41.030.00 2	---	---	---	02.41.030.00 2	---	---
37D	Power Fuse Block Quantity	---	---	---	---	---	---	---	---	---	---	---	---
38A	Power Fuse (2 Pack) (50 Amp) Quantity	---	R02.03.032.02 6	---	---	---	---	---	R02.03.032.02 6	---	---	---	---
38B	Power Fuse (2 Pack) (40 Amp) Quantity	---	---	R02.03.031.02 6	R02.03.031.02 6	---	---	---	---	---	---	---	---
38C	Power Fuse (2 Pack) (40 Amp) Quantity	---	---	---	---	---	R02.03.011.02 3	---	---	---	R02.03.011.02 3	---	---
39	Control Fuse Block	---	02.03.022.00	02.03.022.00	02.03.022.00	---	02.03.023.00	---	02.03.022.00	---	02.03.004.00	---	02.03.004.00
40	Control Fuse (2 Pack)	---	R02.03.014.02	R02.03.014.02	R02.03.014.02	---	R02.03.013.02	---	R02.03.014.02	---	R02.03.001.02	---	R02.03.001.02
41A	Tube, Inlet Water	---	---	---	---	---	---	---	---	---	---	---	---
41B	Tube, Inlet Water	---	03.30.007.00	03.30.007.00	03.30.007.00	---	03.30.007.00	---	03.30.007.00	---	03.30.007.00	---	03.30.007.00
42A	Nipple, Outlet Water	---	---	---	---	---	---	---	---	---	---	---	---
42B	Tube, Outlet Water	---	03.30.009.00	03.30.009.00	03.30.009.00	---	03.30.009.00	---	03.30.009.00	---	03.30.009.00	---	03.30.009.00
	Electrical Diagram	---	HC1-2479	HC1-2477	HC1-2479	---	HC1-2481	---	HC1-2477	---	HC1-1181	---	HC1-1181

Shaded area reflects **export models only**.

PARTS SPECIFIC TO MODEL C-45

ITEM	DESCRIPTION	240V Three Phase	380V Three Phase	415V Three Phase	480V Three Phase	600V Three Phase	380-400V CE 3 Wire	400-415V CE 3 Wire	380-400V CE 4 Wire	400-415V CE 4 Wire
28	Tank with Gaskets	R01.02.031.00	R01.02.031.00	R01.02.031.00	R01.02.031.00	R01.02.031.00	---	---	---	---
29	Heating Element with Gasket Quantity 6	R02.04.701.00 6	R02.04.711.00 6	R02.04.701.00 6	R02.04.703.00 6	R02.04.704.00 6	---	---	---	---
30	Contactors Quantity 3	02.01.018.00 3	02.01.016.00 2	02.01.016.00 2	02.01.016.00 2	02.01.016.00 2	---	---	---	---
31	Thermostat Control	02.16.003.00	02.16.003.00	02.16.003.00	02.16.003.00	02.16.003.00	---	---	---	---
32	Low Water Cut Off Board	02.01.001.00	02.01.001.00	02.01.001.00	02.01.001.00	02.01.001.00	---	---	---	---
33	Transformer, Step Down	---	R02.17.003.00	R02.17.002.00	R02.17.002.00	R02.17.009.00	---	---	---	---
34	Terminal Block	02.15.021.00	02.15.021.00	02.15.021.00	02.15.021.00	R02.15.046.00	---	---	---	---
35	Indicator Light, Red	02.19.151.00	02.19.151.00	02.19.151.00	02.19.151.00	02.19.151.00	---	---	---	---
36	Indicator Light, Green	02.19.150.00	02.19.150.00	02.19.150.00	02.19.150.00	02.19.150.00	---	---	---	---
37A	Power Fuse Block Quantity	---	---	---	---	---	---	---	---	---
37B	Power Fuse Block Quantity	---	---	---	---	---	---	---	---	---
37C	Power Fuse Block Quantity	---	---	---	---	---	---	---	---	---
37D	Power Fuse Block Quantity	---	---	---	---	---	---	---	---	---
38A	Power Fuse (2 Pack) Quantity	---	---	---	---	---	---	---	---	---
38B	Power Fuse (2 Pack) Quantity	---	---	---	---	---	---	---	---	---
38C	Power Fuse (2 Pack) Quantity	---	---	---	---	---	---	---	---	---
39	Control Fuse Block	02.03.004.00	---	---	---	02.03.016.00	---	---	---	---
40	Control Fuse (2 Pack)	R02.03.001.02	R02.03.005.02	R02.03.005.02	R02.03.005.02	R02.03.021.02	---	---	---	---
41A	Tube, Inlet Water	---	---	---	---	---	---	---	---	---
41B	Tube, Inlet Water	03.30.007.00	03.30.007.00	03.30.007.00	03.30.007.00	03.30.007.00	---	---	---	---
42A	Nipple, Outlet Water	---	---	---	---	---	---	---	---	---
42B	Tube, Outlet Water	03.30.009.00	03.30.009.00	03.30.009.00	03.30.009.00	03.30.009.00	---	---	---	---
	Electrical Diagram	HC1-1181	HS1-3887	HS1-3887	HC1-2177	HS1-3887	---	---	---	---

Shaded area reflects export models only.

PARTS SPECIFIC TO MODEL C-54

ITEM	DESCRIPTION	208V		240V		480V		208V		240V		480V	
		Single Phase	Three Phase	Single Phase	Three Phase	Single Phase	Three Phase	Single Phase	Three Phase	Single Phase	Three Phase	Single Phase	Three Phase
28	Tank with Gaskets	---	R01.02.031.00	---	R01.02.031.00	---	R01.02.031.00	---	R01.02.031.00	---	R01.02.031.00	---	R01.02.031.00
29	Heating Element with Gasket Quantity	---	R02.04.710.00 6	---	R02.04.711.00 6	---	R02.04.713.00 6	---	R02.04.710.00 6	---	R02.04.710.00 6	---	R02.04.710.00 6
30	Contactors Quantity	---	02.01.017.00 2	---	02.01.017.00 3	---	02.01.015.00 2	---	02.01.017.00 2	---	02.01.015.00 2	---	02.01.018.00 3
31	Thermostat Control	---	02.16.003.00	---	02.16.003.00	---	02.16.003.00	---	02.16.003.00	---	02.16.003.00	---	02.16.003.00
32	Low Water Cut Off Board	---	02.01.006.00	---	02.01.006.00	---	02.01.006.00	---	02.01.006.00	---	02.01.006.00	---	02.01.001.00
33	Transformer, Step Down	---	02.17.004.00	---	02.17.004.00	---	02.17.005.00	---	02.17.004.00	---	02.17.005.00	---	---
34	Terminal Block	---	---	---	---	---	02.15.021.00	---	02.15.021.00	---	02.15.021.00	---	02.15.021.00
35	Indicator Light, Red	---	02.19.154.00	---	02.19.154.00	---	02.19.154.00	---	02.19.154.00	---	02.19.154.00	---	02.19.151.00
36	Indicator Light, Green	---	---	---	---	---	---	---	---	---	---	---	02.19.150.00
37A	Power Fuse Block Quantity	---	02.41.020.00 1	---	02.41.020.00 1	---	02.41.020.00	---	02.41.020.00	---	02.41.020.00	---	---
37B	Power Fuse Block Quantity	---	02.41.022.00 2	---	02.41.022.00 2	---	02.41.030.00	---	02.41.022.00	---	02.41.030.00	---	---
37C	Power Fuse Block Quantity	---	---	---	---	---	---	---	---	---	---	---	---
37D	Power Fuse Block Quantity	---	---	---	---	---	---	---	---	---	---	---	---
38A	Power Fuse (2 Pack) (60 Amp) Quantity	---	R02.03.033.02 6	---	R02.03.033.02 6	---	---	---	R02.03.033.02 6	---	---	---	---
38B	Power Fuse (2 Pack) (50 Amp) Quantity	---	---	---	---	---	---	---	---	---	---	---	---
38C	Power Fuse (2 Pack) Quantity	---	---	---	---	---	---	---	---	---	---	---	---
39	Control Fuse Block	---	02.03.022.00	---	02.03.022.00	---	02.03.023.00	---	02.03.022.00	---	02.03.023.00	---	02.03.004.00
40	Control Fuse (2 Pack)	---	R02.03.014.02	---	R02.03.014.02	---	R02.03.013.02	---	R02.03.014.02	---	R02.03.013.02	---	R02.03.001.02
41A	Tube, Inlet Water	---	---	---	---	---	---	---	---	---	---	---	---
41B	Tube, Inlet Water	---	03.30.007.00	---	03.30.007.00	---	03.30.007.00	---	03.30.007.00	---	03.30.007.00	---	03.30.007.00
42A	Nipple, Outlet Water	---	---	---	---	---	---	---	---	---	---	---	---
42B	Tube, Outlet Water Electrical Diagram	---	03.30.009.00 HC1-2479	---	03.30.009.00 HC1-2479	---	03.30.009.00 HC1-2481	---	03.30.009.00 HC1-2479	---	03.30.009.00 HC1-2481	---	03.30.009.00 HC1-1181

Shaded area reflects export models only.

PARTS SPECIFIC TO MODEL C-54

ITEM	DESCRIPTION	240V Three Phase	380V Three Phase	415V Three Phase	480V Three Phase	600V Three Phase	380-400V CE 3 Wire	400-415V CE 3 Wire	380-400V CE 4 Wire	400-415V CE 4 Wire
28	Tank with Gaskets	R01.02.031.00	R01.02.031.00	R01.02.031.00	R01.02.031.00	R01.02.031.00	---	---	---	---
29	Heating Element with Gasket Quantity 6	R02.04.711.00 6	R02.04.721.00 6	R02.04.711.00 6	R02.04.713.00 6	R02.04.714.00 6	---	---	---	---
30	Contactor Quantity 3	02.01.018.00 3	02.01.016.00 2	02.01.016.00 2	02.01.016.00 2	02.01.016.00 1	---	---	---	---
31	Thermostat Control	02.16.003.00	02.16.003.00	02.16.003.00	02.16.003.00	02.16.003.00	---	---	---	---
32	Low Water Cut Off Board	02.01.001.00	02.01.001.00	02.01.001.00	02.01.001.00	02.01.001.00	---	---	---	---
33	Transformer, Step Down	---	R02.17.003.00	R02.17.002.00	R02.17.002.00	R02.17.009.00	---	---	---	---
34	Terminal Block	02.15.021.00	02.15.021.00	02.15.021.00	02.15.021.00	02.15.021.00	---	---	---	---
35	Indicator Light, Red	02.19.151.00	02.19.151.00	02.19.151.00	02.19.151.00	02.19.151.00	---	---	---	---
36	Indicator Light, Green	02.19.150.00	02.19.150.00	02.19.150.00	02.19.150.00	02.19.150.00	---	---	---	---
37A	Power Fuse Block Quantity	---	---	---	---	---	---	---	---	---
37B	Power Fuse Block Quantity	---	---	---	---	---	---	---	---	---
37C	Power Fuse Block Quantity	---	---	---	---	---	---	---	---	---
37D	Power Fuse Block Quantity	---	---	---	---	---	---	---	---	---
38A	Power Fuse (2 Pack) Quantity	---	---	---	---	---	---	---	---	---
38B	Power Fuse (2 Pack) Quantity	---	---	---	---	---	---	---	---	---
38C	Power Fuse (2 Pack) Quantity	---	---	---	---	---	---	---	---	---
39	Control Fuse Block	02.03.004.00	---	---	---	02.03.016.00	---	---	---	---
40	Control Fuse (2 Pack)	R02.03.001.02	R02.03.005.02	R02.03.005.02	R02.03.005.02	R02.03.021.02	---	---	---	---
41A	Tube, Inlet Water	---	---	---	---	---	---	---	---	---
41B	Tube, Inlet Water	03.30.007.00	03.30.007.00	03.30.007.00	03.30.007.00	03.30.007.00	---	---	---	---
42A	Nipple, Outlet Water	---	---	---	---	---	---	---	---	---
42B	Tube, Outlet Water	03.30.009.00	03.30.009.00	03.30.009.00	03.30.009.00	03.30.009.00	---	---	---	---
	Electrical Diagram	HC1-1181	HS1-3887	HS1-3887	HC1-2177	HS1-3887	---	---	---	---

Shaded area reflects export models only.

PARTS SPECIFIC TO MODEL C-58

ITEM	DESCRIPTION	208V		240V		480V		208V		240V		480V		208V		240V	
		Single Phase	Three Phase	Single Phase	Three Phase	Single Phase	Three Phase	Single Phase	Three Phase	Single Phase	Three Phase	Single Phase	Three Phase	Single Phase	Three Phase	Single Phase	Three Phase
28	Tank with Gaskets	---	R01.02.031.00	---	R01.02.031.00	---	R01.02.031.00	---	R01.02.031.00	---	R01.02.031.00	---	R01.02.031.00	---	R01.02.031.00	---	R01.02.031.00
29	Heating Element with Gasket Quantity	---	R02.04.720.00	---	R02.04.721.00	---	R02.04.721.00	---	R02.04.720.00	---	R02.04.721.00	---	R02.04.724.00	---	R02.04.720.00	---	R02.04.720.00
30	Contactors Quantity	---	02.01.017.00	---	02.01.017.00	---	02.01.017.00	---	02.01.017.00	---	02.01.017.00	---	02.01.015.00	---	02.01.018.00	---	02.01.018.00
31	Thermostat Control	---	02.16.003.00	---	02.16.003.00	---	02.16.003.00	---	02.16.003.00	---	02.16.003.00	---	02.16.003.00	---	02.16.003.00	---	02.16.003.00
32	Low Water Cut Off Board	---	02.01.006.00	---	02.01.006.00	---	02.01.006.00	---	02.01.006.00	---	02.01.006.00	---	02.01.006.00	---	02.01.001.00	---	02.01.001.00
33	Transformer, Step Down	---	02.17.004.00	---	02.17.004.00	---	02.17.004.00	---	02.17.004.00	---	02.17.004.00	---	02.17.005.00	---	---	---	---
34	Terminal Block	---	---	---	---	---	---	---	---	---	---	---	02.15.021.00	---	02.15.021.00	---	02.15.021.00
35	Indicator Light, Red	---	02.19.154.00	---	02.19.154.00	---	02.19.154.00	---	02.19.154.00	---	02.19.154.00	---	02.19.154.00	---	02.19.151.00	---	02.19.151.00
36	Indicator Light, Green	---	---	---	---	---	---	---	---	---	---	---	---	---	02.19.150.00	---	02.19.150.00
37A	Power Fuse Block Quantity	---	02.41.020.00	---	02.41.020.00	---	02.41.020.00	---	02.41.020.00	---	02.41.020.00	---	---	---	---	---	---
37B	Power Fuse Block Quantity	---	02.41.022.00	---	02.41.022.00	---	02.41.022.00	---	02.41.022.00	---	02.41.022.00	---	---	---	---	---	---
37C	Power Fuse Block Quantity	---	---	---	---	---	---	---	---	---	---	---	02.41.030.00	---	---	---	---
37D	Power Fuse Block Quantity	---	---	---	---	---	---	---	---	---	---	---	2	---	---	---	---
38A	Power Fuse (2 Pack) (60 Amp) Quantity	---	R02.03.033.02	---	---	---	---	---	R02.03.033.02	---	---	---	---	---	---	---	---
38B	Power Fuse (2 Pack) (50 Amp) Quantity	---	---	---	---	---	---	---	---	---	---	---	---	---	---	---	---
38C	Power Fuse (2 Pack) (50 Amp) Quantity	---	---	---	---	---	---	---	---	---	---	---	---	---	---	---	---
39	Control Fuse Block	---	02.03.022.00	---	02.03.022.00	---	02.03.022.00	---	02.03.022.00	---	02.03.022.00	---	02.03.023.00	---	02.03.004.00	---	02.03.004.00
40	Control Fuse (2 Pack)	---	R02.03.014.02	---	R02.03.014.02	---	R02.03.014.02	---	R02.03.014.02	---	R02.03.014.02	---	R02.03.013.02	---	R02.03.001.02	---	R02.03.001.02
41A	Tube, Inlet Water	---	---	---	---	---	---	---	---	---	---	---	---	---	---	---	---
41B	Tube, Inlet Water	---	03.30.007.00	---	03.30.007.00	---	03.30.007.00	---	03.30.007.00	---	03.30.007.00	---	03.30.007.00	---	03.30.007.00	---	03.30.007.00
42A	Nipple, Outlet Water	---	---	---	---	---	---	---	---	---	---	---	---	---	---	---	---
42B	Tube, Outlet Water Electrical Diagram	---	03.30.009.00	---	03.30.009.00	---	03.30.009.00	---	03.30.009.00	---	03.30.009.00	---	03.30.009.00	---	03.30.009.00	---	03.30.009.00
		---	HC1-2479	---	HC1-2479	---	HC1-2479	---	HC1-2479	---	HC1-2479	---	HC1-2481	---	HC1-1181	---	HC1-1181

Shaded area reflects export models only.

PARTS SPECIFIC TO MODEL C-58

ITEM	DESCRIPTION	240V Three Phase	380V Three Phase	415V Three Phase	480V Three Phase	600V Three Phase	380-400V CE 3 Wire	400-415V CE 3 Wire	380-400V CE 4 Wire	400-415V CE 4 Wire
28	Tank with Gaskets	R01.02.031.00	R01.02.031.00	R01.02.031.00	R01.02.031.00	R01.02.031.00	---	---	---	---
29	Heating Element with Gasket Quantity 6	R02.04.721.00 6	R02.04.723.00 6	R02.04.721.00 6	R02.04.724.00 6	R02.04.725.00 6	---	---	---	---
30	Contactors Quantity 3	02.01.018.00 3	02.01.016.00 2	02.01.016.00 2	02.01.016.00 2	02.01.016.00 1	---	---	---	---
31	Thermostat Control	02.16.003.00	02.16.003.00	02.16.003.00	02.16.003.00	02.16.003.00	---	---	---	---
32	Low Water Cut Off Board	02.01.001.00	02.01.001.00	02.01.001.00	02.01.001.00	02.01.001.00	---	---	---	---
33	Transformer, Step Down	---	R02.17.003.00	R02.17.002.00	R02.17.002.00	02.17.009.00	---	---	---	---
34	Terminal Block	02.15.021.00	02.15.021.00	02.15.021.00	02.15.021.00	02.15.021.00	---	---	---	---
35	Indicator Light, Red	02.19.151.00	02.19.151.00	02.19.151.00	02.19.151.00	02.19.151.00	---	---	---	---
36	Indicator Light, Green	02.19.150.00	02.19.150.00	02.19.150.00	02.19.150.00	02.19.150.00	---	---	---	---
37A	Power Fuse Block Quantity	---	---	---	---	---	---	---	---	---
37B	Power Fuse Block Quantity	---	---	---	---	---	---	---	---	---
37C	Power Fuse Block Quantity	---	---	---	---	---	---	---	---	---
37D	Power Fuse Block Quantity	---	---	---	---	---	---	---	---	---
38A	Power Fuse (2 Pack) Quantity	---	---	---	---	---	---	---	---	---
38B	Power Fuse (2 Pack) Quantity	---	---	---	---	---	---	---	---	---
38C	Power Fuse (2 Pack) Quantity	---	---	---	---	---	---	---	---	---
39	Control Fuse Block	02.03.004.00	---	---	---	02.03.016.00	---	---	---	---
40	Control Fuse (2 Pack)	R02.03.001.02	R02.03.005.02	R02.03.005.02	R02.03.005.02	R02.03.021.02	---	---	---	---
41A	Tube, Inlet Water	---	---	---	---	---	---	---	---	---
41B	Tube, Inlet Water	03.30.007.00	03.30.007.00	03.30.007.00	03.30.007.00	03.30.007.00	---	---	---	---
42A	Nipple, Outlet Water	---	---	---	---	---	---	---	---	---
42B	Tube, Outlet Water	03.30.009.00	03.30.009.00	03.30.009.00	03.30.009.00	03.30.009.00	---	---	---	---
	Electrical Diagram	HC1-1181	HS1-3887	HS1-3887	HC1-2177	HS1-3887	---	---	---	---

Shaded area reflects export models only.

HATCO AUTHORIZED PARTS DISTRIBUTORS

ALABAMA

Jones McLeod Appl. Svc.
Birmingham 205-251-0159

ARIZONA

Auth. Comm. Food Equip.
Phoenix 602-234-2443
Byassee Equipment Co.
Phoenix 602-252-0402

CALIFORNIA

Industrial Electric
Huntington Beach 714-379-7100
Chapman Appl. Service
San Diego 619-298-7106
P & D Appliance
S. San Francisco 650-635-1900

COLORADO

Hawkins Commercial Appliance
Englewood 303-781-5548

DELAWARE

Food Equipment Service
Wilmington 302-996-9363

FLORIDA

Whaley Foodservice Repair
Jacksonville 904-725-7800
Nass Service Co., Inc.
Orlando 407-425-2681
B.G.S.I.
Pompano Beach 954-971-0456
Comm. Appliance Service
Tampa 813-663-0313

GEORGIA

Southeastern Rest. Svc.
Norcross 770-446-6177

HAWAII

Burney's Comm. Service, Inc.
Honolulu 808-848-1466
Food Equip Parts & Service
Honolulu 808-847-4871

ILLINOIS

Parts Town
Lombard 708-865-7278
Eichenauer Elec. Service
Decatur 217-429-4229
Midwest Elec. Appl. Service
Elmhurst 630-279-8000
Cone's Repair Service
Moline 309-797-5323

INDIANA

GCS Service
Indianapolis 317-545-9655

IOWA

Electric Motor Service Co.
Davenport 319-323-1823

KENTUCKY

GCS Service
Louisville 502-367-1788

LOUISIANA

Chandlers Parts & Service
Baton Rouge 225-272-6620
Bana Comm. Parts, Inc.
Shreveport 318-631-6550

MARYLAND

Electric Motor Service
Baltimore 410-467-8080
GCS Service
Silver Spring 301-585-7550

MASSACHUSETTS

Ace Service Co., Inc.
Needham 781-449-4220

MICHIGAN

Commercial Kitchen Service
Bay City 517-893-4561
Bildons Appliance Service
Detroit 248-478-3320

Midwest Food Equip. Service
Grandville 616-261-2000

MINNESOTA

GCS Service
Minneapolis 612-546-4221

MISSOURI

GCS Service
Kansas City 816-920-5999
Commercial Kitchen Services
St. Louis 314-890-0700

Kaemmerlen Parts & Service
St. Louis 314-535-2222

NEBRASKA

Anderson Electric
Omaha 402-341-1414

NEVADA

Burney's Commercial
Las Vegas 702-736-0006
Hi. Tech Commercial Service
N. Las Vegas 702-649-4616

NEW JERSEY

Jay Hill Repair
Fairfield 973-575-9145
Service Plus
Flanders 973-691-6300

NEW YORK

Acme American Repairs, Inc.
Brooklyn 718-456-6544
Alpro Service Co.
Brooklyn 718-386-2515

NEW YORK (continued)

Appliance Installation
Buffalo 716-884-7425
Northern Parts Dist.
Plattsburgh 518-563-3200
J. B. Brady, Inc.
Syracuse 315-422-9271

NORTH CAROLINA

Authorized Appliance
Charlotte 704-377-4501

OHIO

Akron/Canton Comm. Svc. Inc.
Akron 330-753-6635
Certified Service Center
Cincinnati 513-772-6600

GCS Service
Columbus 614-476-3225

Electrical Appl. Repair Service
Independence 216-459-8700

E. A. Wichman Co.
Toledo 419-385-9121

OKLAHOMA

Hagar Rest. Service, Inc.
Oklahoma City 405-235-2184
Krueger, Inc.
Oklahoma City 405-528-8883

OREGON

Bressie Electric Co.
Portland 503-231-7171

Ron's Service, Inc.
Portland 503-624-0890

PENNSYLVANIA

Authorized Factory Service
Coraopolis 412-262-2330
FAST Comm. Appl. Service
Philadelphia 215-288-4800

GCS Service
Pittsburgh 412-787-1970

K & D Service Co.
Harrisburg 717-236-9039

Elmer Schultz Services
Philadelphia 215-627-5401

Electric Repair Co.
Reading 610-376-5444

RHODE ISLAND

Marshall Electric Co.
Providence 401-331-1163

SOUTH CAROLINA

Whaley Foodservice Repair
W. Columbia 803-791-4420

TENNESSEE

Camp Electric
Memphis 901-527-7543

TEXAS

Stove Parts Supply
Fort Worth 817-831-0381

Armstrong Repair Service
Houston 713-666-7100

Commercial Kitchen Repair Co.
San Antonio 210-735-2811

San Antonio Rest. Equip.
San Antonio 210-532-1660

UTAH

GCS Service
Salt Lake City 801-487-3653

VIRGINIA

Daubers
Norfolk 757-855-4097

Daubers
Springfield 703-866-3600

WASHINGTON

Restaurant Appl. Service
Seattle 206-524-8200

WISCONSIN

A.S.C., Inc.
Madison 608-246-3160

A.S.C., Inc.
Milwaukee 414-543-6460

CANADA

BRITISH COLUMBIA

Key Food Equipment Service
Vancouver 604-433-4484

ONTARIO

R.G. Henderson Ltd.
Toronto 416-422-5580

Choquette CKS
Ottawa 613-739-8458

QUÉBEC

Choquette CKS
Montreal 514-722-2000

Choquette CKS
Québec City 418-681-3944

HATCO CORPORATION

P.O. Box 340500, Milwaukee, WI 53234-0500 U.S.A.

(800) 558-0607 (414) 671-6350

Parts & Service Fax (800) 690-2966 Int'l. Fax (414) 671-3976

www.hatcocorp.com