



**IMPORTANT NOTE:**

Locate the Specification Label on unit to determine exact Model Name and electrical specifications. This information is needed to identify the correct replacement parts. See exploded view illustration(s) for Specification Label location.

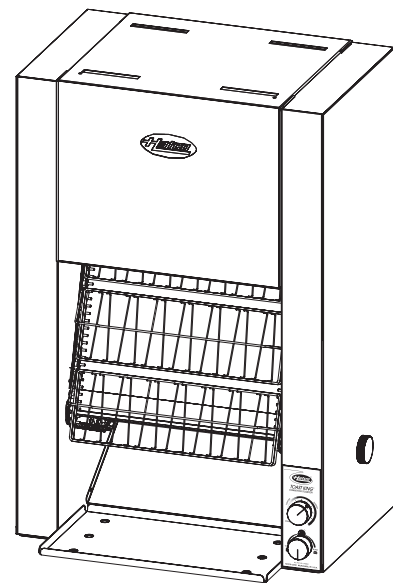
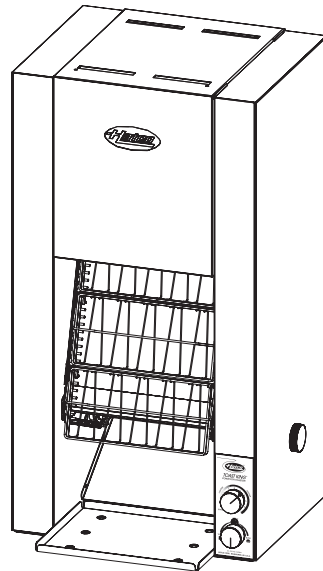


Use of replacement parts other than those supplied by Hatco Corporation may result in damage to unit or injury to personnel and will void all warranties.

# Toast-King® Conveyor Toasters

## TK Series

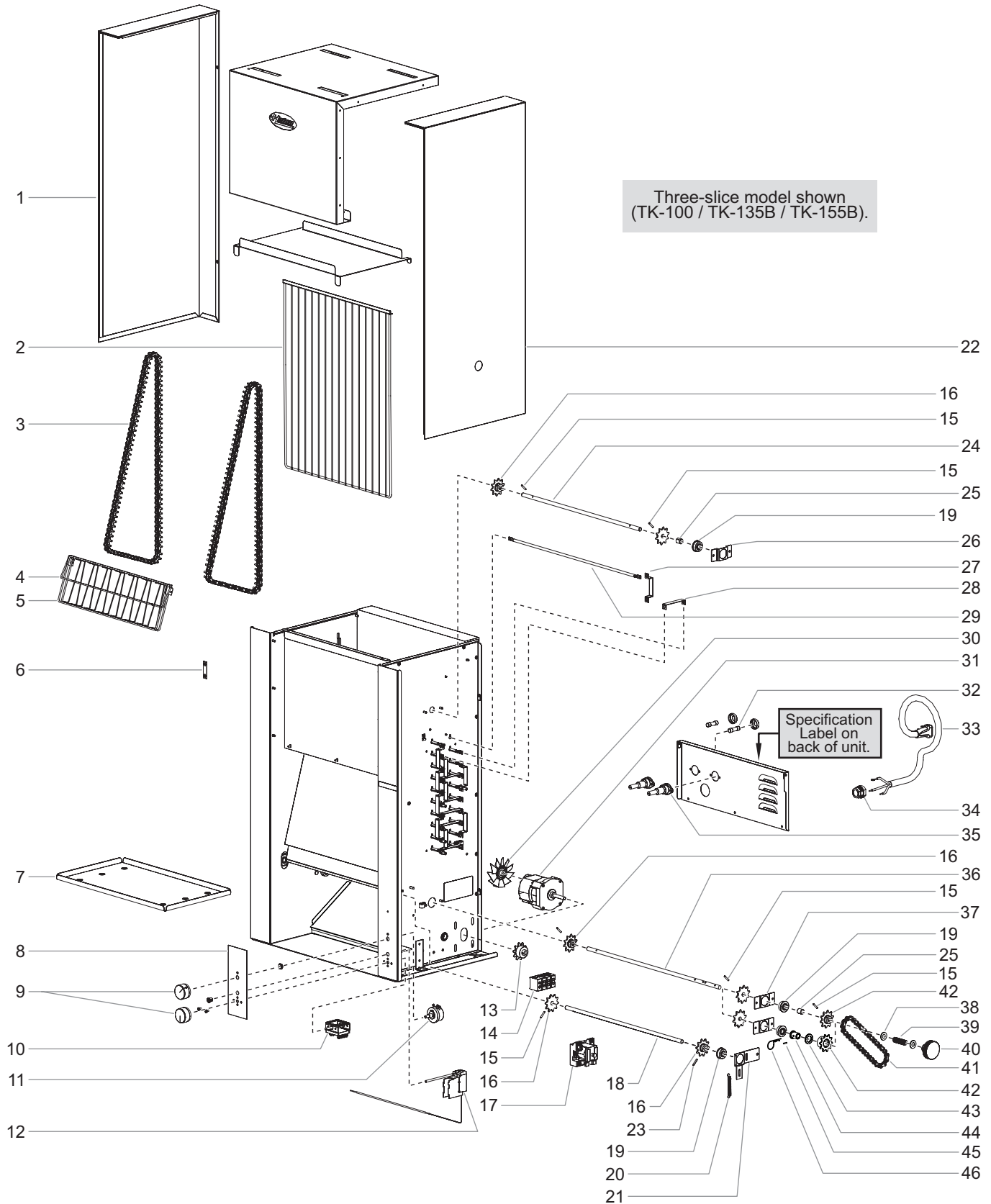
<u>Model Name</u>	<u>Page</u>	<u>Model Name</u>	<u>Page</u>	<u>Model Name</u>	<u>Page</u>
TK-72 and TK-75E	....3	TK-90B	.....5	Conveyor Shaft	
TK-100 and TK-105E	.....4	TK-135B and TK-155B	.....6	Assembly Guide	.....7



# Replacement Parts List

# Hatco Toast-King® Conveyor Toasters

## All Models



## Parts for TK-72 and TK-72E Models

Item	Description	Part Number	Qty.
1	Side Cover, Left	04.05.003.00	1
2	Basket Guide	04.05.101.00	1
3	Conveyor Chain	R05.03.007A.00	2
4	Hold Down Bar	04.05.143.00	10
5	Conveyor Basket	04.05.142.00	10
6	Buss Bar, Flat	04.05.062.00	10
7	Toast Collector Pan	04.05.050.00	1
8	Label, Control Plate	07.01.217.00	1
9	Control Knob	05.30.020.00	2
10	Selector Switch		
	208 and 240 V	R02.19.082.00	1
	200, 220, 230, and 240 V	02.19.196.00	1
11	Rheostat		
	208 and 240 V	R02.13.111.00	1
	200, 220, 230, and 240 V	R02.13.125.00	1
12	Thermostat	02.16.011.00	1
13	Drive Sprocket	05.09.031.00	1
14	Terminal Bracket	R02.13.046.00	1
15	Spring Pin, 1/8" x 3/4"	05.08.006.00	5
16	Conveyor Chain Sprocket	05.09.020.00	6
17	Relay, Element	02.01.147.00	1
18	Shaft, Lower Front	05.07.009.00	1
19	Ball Bearing Hub	05.02.011.00	6
20	Tension Spring	05.08.001.00	1
21	Adjustable Bearing Retainer	04.30.022.00	1
22	Side Cover, Right	04.05.002.00	1
23	Spring Pin, 1/8" x 7/16"	05.08.007.00	1
24	Shaft, Upper Rear	05.07.008.00	1
25	Bearing Spacer	05.11.022.00	3
26	Upper Bearing Retainer	04.30.020.00	2
27	Buss Bar, Hat Shaped	04.05.063.00	10
28	Buss Bar, "U" Shaped	04.05.060.00	6

\* Includes items 15, 19, 37–39, and 42–46.

† Not shown in illustration on page 2.

The shaded areas contain electrical information for **International models only**.

*NOTE: Quantities shown as a range (example = "1–4") are dependent upon the model.*

Item	Description	Part Number	Qty.
29	Heating Elements		
	208 V, 200 W (104 V)	R02.09.002.00	20
	240 V, 200 W (120 V)	R02.09.001.00	20
	200 V, 200 W (104 V)	R02.09.002.00	20
	220 V, 200 W (110 V)	R02.09.200E.00	20
	230 V, 240 W (115 V)	R02.09.201.00	20
30	Fan Blade, Motor	02.12.088.01	1
31	Gear Motor		
	208 V (60 Hz)	R02.12.020.00	1
	240 V (60 Hz)	R02.12.021.00	1
	200 V (50 Hz)	R02.12.020.00	1
	220 V (60 Hz)	R02.12.021.00	1
	220, 230, and 240 V (50 Hz)	R02.12.025.00	1
32	Fuse, 1 A (2-pack)	R02.03.005A.02	1
33	Power Cord		
	250 V, 20 A, NEMA 6-20P	02.18.016.00	1
	250 V, 25 A, No Plug	02.18.103.00	1
34	Cord Grip		
	208, 240 V	02.20.209.00	1
	200 V	02.20.209.00	1
	220, 230, and 240 V	R02.20.259.00	1
35	Fuse Holder w/ Fuse	R02.19.028.00	2
36	Shaft, Lower Rear, Threaded	05.07.007.00	1
37	Lower Bearing Retainer	04.30.021.00	2
38	Washer, Flat	05.04.369.00	1
39	Compression Spring	05.08.005.00	1
40	Manual Advance Knob	05.30.001.00	1
41	Drive Chain	05.03.038.00	1
42	Driven Sprocket	05.09.020.00	1
43	Washer, Thrust	---	
44	Bearing	---	
45	Pin, Spring	---	
46	Pin, Cotter	---	
47	Bearing Assembly * †	---	
48	Capacitor, Power Cord (TK-72 and TK-75E CE Units) †	02.13.307.00	1
49	Diode †	02.40.002.00	1
50	Conveyor Chain Connector Link †	05.03.009A.00	2
51	Motor Relay (TK-75E CE Units) †	02.01.180.00	1
52	Capacitor, Motor Relay (TK-75E CE Units) †	02.13.303.00	1
53	Motor Resistor (TK-75E CE Units) †	02.13.325.00	1
54	Terminal Block, Power Cord (TK-72 and TK-75E CE Units) †	R02.15.035.00	1
	Wiring Diagram		
	TK-72	10-01-1046	
	TK-75E	10-01-1048	

*NOTE: The last four digits in a ten digit numerical serial number are the manufacturing date code.*

*Example: Serial number 9625062231 has a date code of "2231" which indicates the following: 2231*

└─ Week Thirty-One  
└─ Year 2022

**Parts for TK-100 and TK-105E Models (see illustration on page 2)**

Item	Description	Part Number	Qty.
1	Side Cover, Left	04.05.003.00	1
2	Basket Guide	04.05.121.00	1
3	Conveyor Chain	R05.03.007A.00	2
4	Hold Down Bar	04.05.123.00	10
5	Conveyor Basket	04.05.122.00	10
6	Buss Bar, Flat	04.05.062.00	10
7	Toast Collector Pan	04.05.051.00	1
8	Label, Control Plate	07.01.217.00	1
9	Control Knob	05.30.020.00	2
10	Selector Switch		
	208 and 240 V	R02.19.082.00	1
	200, 220, 230, and 240 V	02.19.196.00	1
11	Rheostat		
	208 and 240 V	R02.13.111.00	1
	200, 220, 230, and 240 V	R02.13.125.00	1
12	Thermostat	02.16.011.00	1
13	Drive Sprocket	05.09.031.00	1
14	Terminal Bracket	R02.13.046.00	1
15	Spring Pin, 1/8" x 3/4"	05.08.006.00	5
16	Conveyor Chain Sprocket	05.09.020.00	6
17	Relay, Element	02.01.147.00	1
18	Shaft, Lower Front	05.07.006.00	1
19	Ball Bearing Hub	05.02.011.00	6
20	Tension Spring	05.08.001.00	1
21	Adjustable Bearing Retainer	04.30.022.00	1
22	Side Cover, Right	04.05.002.00	1
23	Spring Pin, 1/8" x 7/16"	05.08.007.00	1
24	Shaft, Upper Rear	05.07.005.00	1
25	Bearing Spacer	05.11.022.00	3
26	Upper Bearing Retainer	04.30.020.00	2
27	Buss Bar, Hat Shaped	04.05.063.00	10
28	Buss Bar, "U" Shaped	04.05.060.00	6
29	Heating Elements		
	TK-100		
	208 V, 250 W (104 V)	R02.09.017.00	20
	240 V, 250 W (120 V)	R02.09.018.00	20
	200 V, 250 W (104 V)	R02.09.017.00	20
	220 V, 250 W (110 V)	R02.09.202E.00	20
	230 V, 250 W (120 V)	R02.09.218.00	20
	240 V, 250 W (120 V)	R02.09.218.00	20
	TK-105E		
	220/230 V, 250 W (110 V)	R02.09.202E.00	4
	220/230 V, 330 W (110 V)	R02.09.221E.00	8
	220/230 V, 470 W (110 V)	R02.09.222E.00	8
	230/240 V, 250 W (110 V)	R02.09.218.00	4
	230/240 V, 330 W (110 V)	R02.09.216.00	8
	230/240 V, 470 W (110 V)	R02.09.065.00	8

\* Includes items 15, 19, 37–39, and 42–46.

† Not shown in illustration on page 2.

The shaded areas contain electrical information for **International models only**.

NOTE: Quantities shown as a range (example = "1–4") are depend upon the model.

Item	Description	Part Number	Qty.
30	Fan Blade, Motor	02.12.088.01	1
31	Gear Motor		
	208 V (60 Hz)	R02.12.020.00	1
	240 V (60 Hz)	R02.12.021.00	1
	200 V (50 Hz)	R02.12.020.00	1
	220 V (60 Hz)	R02.12.021.00	1
	220, 230, and 240 V (50 Hz)	R02.12.025.00	1
32	Fuse, 1 A (2-pack)	R02.03.005A.02	1
33	Power Cord		
	250 V, 20 A, NEMA 6-20P	02.18.017.00	1
	250 V, 25 A, No Plug	02.18.103.00	1
34	Cord Grip		
	208, 240 V	02.20.209.00	1
	200 V	02.20.209.00	1
	220, 230, and 240 V	R02.20.259.00	1
35	Fuse Holder w/ Fuse	R02.19.028.00	2
36	Shaft, Lower Rear, Threaded	05.07.004.00	1
37	Lower Bearing Retainer	04.30.021.00	2
38	Washer, Flat	05.04.369.00	1
39	Compression Spring	05.08.005.00	1
40	Manual Advance Knob	05.30.001.00	1
41	Drive Chain		
	TK-100	05.03.038.00	1
	TK-105E		
	220 and 240 V	05.03.038.00	1
	220, 240, 220/230, and 230/240 V	05.03.064.00	1
42	Driven Sprocket	05.09.020.00	1
	TK-100	05.09.020.00	1
	TK-105E		
	220 and 240 V	05.09.020.00	1
	220, 240, 220/230, 230/240 V	05.09.029.00	1
43	Washer, Thrust	---	
44	Bearing	---	
45	Pin, Spring	---	
46	Pin, Cotter	---	
47	Bearing Assembly * †	---	
48	Capacitor, Power Cord (TK-72 and TK-75E CE Units) †	02.13.307.00	1
49	Diode †	02.40.002.00	1
50	Conveyor Chain Connector Link †	05.03.009A.00	2
51	Motor Relay (TK-75E CE Units) †	02.01.180.00	1
52	Capacitor, Motor Relay (TK-75E CE Units) †	02.13.303.00	1
53	Motor Resistor (TK-75E CE Units) †	02.13.325.00	1
54	Terminal Block, Power Cord (TK-72 and TK-75E CE Units) †	R02.15.035.00	1
	Wiring Diagram		
	TK-100	10-01-1045	
	TK-105E	10-01-1049	

**Parts for TK-90B Models (see illustration on page 2)**

Item	Description	Part Number	Qty.
1	Side Cover, Left	04.05.003.00	1
2	Basket Guide	04.05.101.00	1
3	Conveyor Chain	R05.03.007A.00	2
4	Hold Down Bar	04.05.143.00	10
5	Conveyor Basket	04.05.142.00	10
6	Buss Bar, Flat	04.05.062.00	5
7	Toast Collector Pan	04.05.050.00	1
8	Label, Control Plate	07.01.054.00	1
9	Control Knob	05.30.020.00	2
10	Selector Switch		
	208 and 240 V	R02.19.082.00	1
	200, 220, 230, and 240 V	02.19.196.00	1
11	Rheostat		
	208 and 240 V	R02.13.111.00	1
	200, 220, 230, and 240 V	R02.13.125.00	1
12	Thermostat	02.16.011.00	1
13	Drive Sprocket	05.09.028.00	1
14	Terminal Bracket	R02.13.046.00	1
15	Spring Pin, 1/8" x 3/4"	05.08.006.00	5
16	Conveyor Chain Sprocket	05.09.020.00	6
17	Relay, Element	---	
18	Shaft, Lower Front	05.07.009.00	1
19	Ball Bearing Hub	05.02.011.00	6
20	Tension Spring	05.08.001.00	1
21	Adjustable Bearing Retainer	04.30.022.00	1
22	Side Cover, Right	04.05.002.00	1
23	Spring Pin, 1/8" x 7/16"	05.08.007.00	1
24	Shaft, Upper Rear	05.07.008.00	1
25	Bearing Spacer	05.11.022.00	2
26	Upper BEaring Retainer	04.30.020.00	2
27	Buss Bar, Hat Shaped		
	2-1/2" Spacing	04.05.063.00	9
	5" Spacing	04.05.061.00	2
28	Buss Bar, "U" Shaped	04.05.060.00	1

Item	Description	Part Number	Qty.
29	Heating Elements		
	208 V, 200 W (104 V)	R02.09.002.00	6
	208 V, 250 W (104 V)	R02.09.005.00	8
	240 V, 200 W (120 V)	R02.09.001.00	6
	240 V, 250 W (120 V)	R02.09.004.00	8
	220 V, 200 W (115 V)	R02.09.200E.00	6
	220 V, 250 W (115 V)	R02.09.201E.00	8
30	Fan Blade, Motor	02.12.088.01	1
31	Gear Motor		
	200 and 208 V	R02.12.020.00	1
	220 and 240 V	R02.12.021.00	1
	220, 230, and 240 V	R02.12.025.00	1
32	Fuse, 1 A (2-pack)	---	
33	Power Cord		
	250 V, 20 A, NEMA 6-20P	02.18.016.00	1
	250 V, 25 A, No Plug	02.18.075.00	1
34	Cord Grip		
	200, 208, 240 V	02.20.209.00	1
	220, 230, and 240 V	R02.20.259.00	1
35	Fuse Holder w/ Fuse	---	
36	Shaft, Lower Rear, Threaded	05.07.007.00	1
37	Lower Bearing Retainer	04.30.021.00	2
38	Washer, Flat	05.04.369.00	1
39	Compression Spring	05.08.005.00	1
40	Manual Advance Knob	05.30.001.00	1
41	Drive Chain	05.03.038.00	1
42	Driven Sprocket	R05.09.022.00	1
43	Washer, Thrust	05.11.004.00	1
44	Bearing	05.02.003.00	1
45	Pin, Spring	05.08.004.00	1
46	Pin, Cotter	05.04.352.00	1
47	Bearing Assembly *	R00.05.0103.00	1
48	Capacitor/Resistor	---	
49	Diode †	02.40.002.00	1
50	Conveyor Chain Connector Link †	05.03.009A.00	2
	Wiring Diagram		
	208 and 240 V	HS1-4585	
	220 V	HS1-3277	

\* Includes items 15, 19, 37–39, and 42–46.

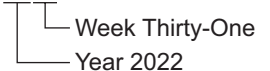
† Not shown in illustration on page 2.

The shaded areas contain electrical information for **International models only**.

*NOTE: Quantities shown as a range (example = "1–4") are dependend upon the model.*

*NOTE: The last four digits in a ten digit numerical serial number are the manufacturing date code.*

*Example: Serial number 9625062231 has a date code of "2231" which indicates the following: 2231*



**Parts for TK-135B and TK-155B Models (see illustration on page 2)**

Item	Description	Part Number	Qty.
1	Side Cover, Left	04.05.003.00	1
2	Basket Guide	04.05.121.00	1
3	Conveyor Chain	R05.03.007A.00	2
4	Hold Down Bar	04.05.123.00	10
5	Conveyor Basket	04.05.122.00	10
6	Buss Bar, Flat	04.05.062.00	5-10
7	Toast Collector Pan	04.05.051.00	1
8	Label, Control Plate		
	TK-135B	07.01.054.00	1
	TK-155B	07.01.215.00	1
9	Control Knob	05.30.020.00	2
10	Selector Switch		
	208 and 240 V	R02.19.082.00	1
	200, 220, 230, and 240 V	02.19.196.00	1
11	Rheostat		
	208 and 240 V	R02.13.111.00	1
	200, 220, 230, and 240 V	R02.13.125.00	1
12	Thermostat	02.16.011.00	1
13	Drive Sprocket		
	TK-135B	05.09.028.00	1
	TK-155B	05.09.025.00	1
14	Terminal Bracket		
	TK-135B (3-pole)	R02.13.046.00	1
	TK-155B (5-pole)	R02.13.047.00	1
15	Spring Pin, 1/8" x 3/4"	05.08.006.00	5
16	Conveyor Chain Sprocket	05.09.020.00	6
17	Relay, Element (TK-155B only)	02.01.008.00	1
18	Shaft, Lower Front	05.07.006.00	1
19	Ball Bearing Hub	05.02.011.00	6
20	Tension Spring	05.08.001.00	1
21	Adjustable Bearing Retainer	04.30.022.00	1
22	Side Cover, Right	04.05.002.00	1
23	Spring Pin, 1/8" x 7/16"	05.08.007.00	1
24	Shaft, Upper Rear	05.07.005.00	1
25	Bearing Spacer	05.11.022.00	2
26	Upper Bearing Retainer	04.30.020.00	2
27	Buss Bar, Hat Shaped		
	2-1/2" Spacing	04.05.063.00	8
	5" Spacing	04.05.061.00	2
28	Buss Bar, "U" Shaped	04.05.060.00	2-6
29	Heating Elements		
	TK-135B		
	208 V, 330 W (104 V)	R02.09.015.00	10
	208 V, 250 W (104 V)	R02.09.017.00	4
	240 V, 330 W (120 V)	R02.09.016.00	10
	240 V, 250 W (120 V)	R02.09.018.00	4
	230 V, 330 W (115 V)	R02.09.016.00	10
	230 V, 250 W (110 V)	R02.09.018.00	4
	240 V, 330 W (120V)	R02.09.016.00	10
	240 V, 250 W (120 V)	R02.09.018.00	4
	230/240 V, 300 W (120 V)	R02.09.016.00	10
	230/240 V, 250 W (120 V)	R02.09.018.00	4

Item	Description	Part Number	Qty.
29	Heating Elements		
	208 V, 330 W (104 V)	R02.09.015.00	6
	208 V, 250 W (104 V)	R02.09.017.00	10
	208 V, 125 W (104 V)	R02.09.020.00	4
	240 V, 330 W (120 V)	R02.09.016.00	6
	240 V, 250 W (120 V)	R02.09.018.00	10
	240 V, 125 W (120 V)	R02.09.019.00	4
	220 V, 330 W (110 V)	R02.09.221E.00	8
	220 V, 250 W (110 V)	R02.09.202E.00	8
	220 V, 250 W (110 V)	R02.09.045E.00	4
	230 V, 330 W (115 V)	R02.09.211E.00	8
	230 V, 250 W (110 V)	R02.09.202E.00	8
	230 V, 125 W (115 V)	R02.09.213E.00	4
30	Fan Blade, Motor	02.12.088.01	1
31	Gear Motor		
	200 and 208 V	R02.12.020.00	1
	220 and 240 V	R02.12.021.00	1
	220, 230, and 240 V	R02.12.025.00	1
32	Fuse, 1 A (2-pack)	R02.03.005A.02	1
33	Power Cord		
	240 V, 20 A, NEMA 6-20P	02.18.016.00	1
	250 V, 25 A, NEMA 6-30P (TK-135B, 208 V)	02.18.017.00	1
	250 V, 25 A, No Plug	02.18.103.00	1
34	Cord Grip		
	200, 208, 240 V	02.20.209.00	1
	220, 230, and 240 V	R02.20.259.00	1
35	Fuse Holder w/ Fuse	R02.19.028.00	2
36	Shaft, Lower Rear, Threaded	05.07.004.00	1
37	Lower Bearing Retainer	04.30.021.00	2
38	Washer, Flat	05.04.369.00	2
39	Compression Spring	05.08.005.00	1
40	Manual Advance Knob	05.30.001.00	1
41	Drive Chain		
	TK-135B	05.03.064.00	1
	TK-155B	05.03.065.00	1
42	Driven Sprocket	R05.09.022.00	1
43	Washer, Thrust	05.11.004.00	1
44	Bearing	05.02.003.00	1
45	Pin, Spring	05.08.004.00	1
46	Pin, Cotter	05.04.352.00	1
47	Bearing Assembly *	R00.05.0103.00	1
48	Capacitor/Resistor	02.13.307.00	1
49	Diode †	02.40.002.00	1
50	Conveyor Chain Connector Link †	05.03.009A.00	2
51	Heater Diode Assembly (TK-155B) †	AS.660.00	1
	Wiring Diagram		
	TK-135B	10-01-1043	
	TK-155B	10-01-1044	

\* Includes items 15, 19, 37-39, and 42-46.

† Not shown in illustration on page 2.

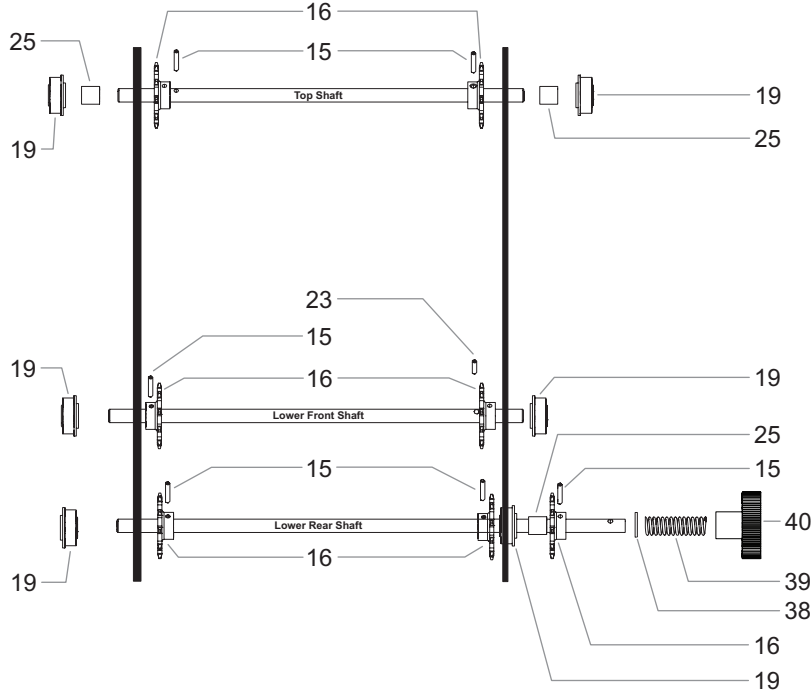
The shaded areas contain electrical information for **International models only**.

NOTE: Quantities shown as a range (example = "1-4") are depend upon the model.



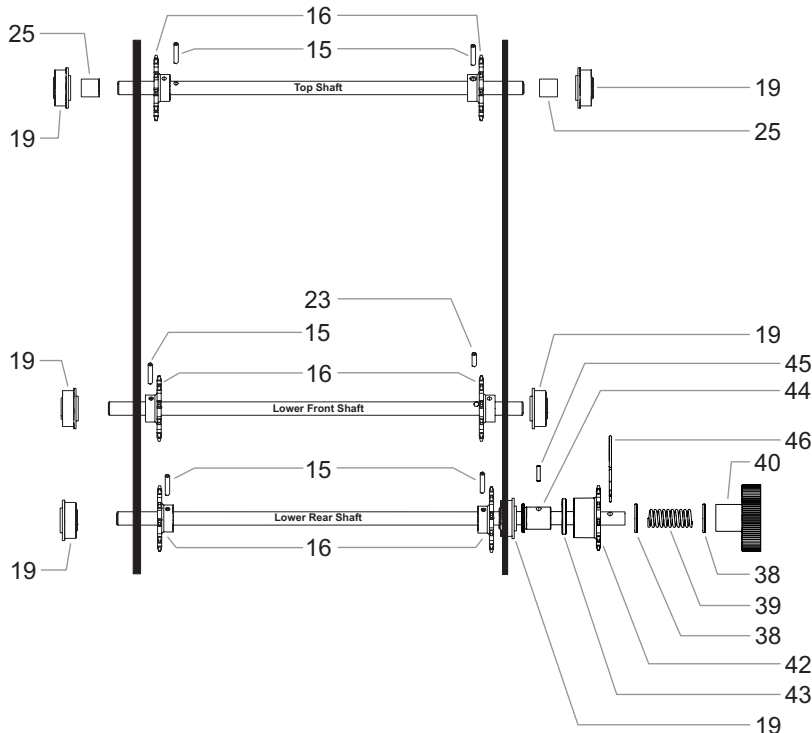
# Conveyor Shaft Assembly Guide — Sprocket and Pin Arrangement

## TK-72, TK-75E, TK-100, and TK-105E Models



Item	Description	Part Number
15	Spring Pin, 1/8" x 3/4"	05.08.006.00
16	Conveyor Sprocket	05.09.020.00
19	Ball Bearing Hub	05.02.011.00
23	Spring Pin, 1/8" x 7/16"	05.08.007.00
25	Bearing Spacer	05.11.022.00
38	Washer, Flat	05.04.369.00
39	Compression Spring	05.08.005.00
40	Manual Advance Knob	05.30.001.00
42	Driven Sprocket	05.09.022.00
43	Washer, Thrust	05.11.004.00
44	Bearing	05.02.003.00
45	Spring Pin, 3/32" x 7/16"	05.08.004.00
46	Pin, Cotter	05.04.352.00

## TK-90B, TK-135B, and TK-155B Models



**NOTE:** The last four digits in a ten digit numerical serial number are the manufacturing date code.

Example: Serial number 962506**2231** has a date code of "2231" which indicates the following: 2231

Week Thirty-One  
Year 2022

# AUTHORIZED PARTS DISTRIBUTORS • DISTRIBUTEURS DE PIÈCES AUTORISÉS

## ALABAMA

Jones McLeod Appl. Svc.  
Birmingham 205-251-0159

## ARIZONA

Tech 24  
Phoenix 602-234-2443

Byassee Equipment Co.  
Phoenix 602-252-0402

## CALIFORNIA

Industrial Electric  
Commercial Parts & Service, Inc.  
Huntington Beach 714-379-7100

Chapman Appl. Service  
San Diego 619-298-7106

P & D Appliance  
Commercial Parts & Service, Inc.  
S. San Francisco 650-635-1900

## COLORADO

Hawkins Commercial Appliance  
Englewood 303-781-5548

## FLORIDA

Whaley Foodservice Repair  
Jacksonville 904-725-7800

Whaley Foodservice Repair  
Orlando 407-757-0851

B.G.S.I./Heritage  
Pompano Beach 954-971-0456

Comm. Appliance Service  
Tampa 813-663-0313

## GEORGIA

Heritage Service Group  
Norcross 866-388-9837

## HAWAII

Burney's Comm. Service, Inc.  
Honolulu 808-848-1466

Food Equip Parts & Service  
Honolulu 808-847-4871

## ILLINOIS

Parts Town  
Addison 708-865-7278

Eichenauer Elec. Service  
Decatur 217-429-4229

Midwest Elec. Appl. Service  
Elmhurst 630-279-8000

Cone's Repair Service  
Moline 309-797-5323

## IOWA

Goodwin Tucker Group  
Des Moines 515-262-9308

## KENTUCKY

Tech 24  
Lexington 859-254-8854

Tech 24  
Louisville 502-451-5411

## LOUISIANA

Chandlers Parts & Service  
Baton Rouge 225-272-6620

## MARYLAND

Electric Motor Service  
Baltimore 410-467-8080

## MASSACHUSETTS

Ace Service Co., Inc.  
Needham 781-449-4220

## MICHIGAN

Bildons Appliance Service  
Detroit 248-478-3320

Commercial Kitchen Service  
Bay City 989-893-4561

Midwest Food Equip. Service  
Grandville 616-261-2000

## MISSOURI

General Parts  
Kansas City 816-421-5400

Commercial Kitchen Services  
St. Louis 314-890-0700

Kaemmerlen Parts & Service  
St. Louis 314-535-2222

## NEBRASKA

Anderson Electric  
Omaha 402-341-1414

## NEVADA

Burney's Commercial  
Las Vegas 702-736-0006

Hi. Tech Commercial Service  
N. Las Vegas 702-649-4616

## NEW JERSEY

Jay Hill Repair  
Fairfield 973-575-9145

Service Plus  
Flanders 973-691-6300

## NEW YORK

Alpro Service Co.  
Maspeth 718-386-2515

Duffy's - AIS  
Buffalo 716-884-7425

3Wire  
Plattsburgh 800-634-5005

Duffy's - AIS  
Sauquoit 800-836-1014

J.B. Brady, Inc.  
Syracuse 315-422-9271

## NORTH CAROLINA

Authorized Appliance  
Charlotte 704-377-4501

## OHIO

Akron/Canton Comm. Svc. Inc.  
Akron 330-753-6634

Tech 24  
Cincinnati 513-772-6600

Commercial Parts and Service  
Columbus 614-221-0057

Electrical Appl. Repair Service  
Brooklyn Heights 216-459-8700

E. A. Wichman Co.  
Toledo 419-385-9121

## OKLAHOMA

Hagar Rest. Service, Inc.  
Oklahoma City 405-235-2184

## OREGON

General Parts Group  
Portland 503-624-0890

## PENNSYLVANIA

Elmer Schultz Services  
Philadelphia 215-627-5401

FAST Comm. Appl. Service  
Philadelphia 215-288-4800

AIS Commercial Parts and Service  
Pittsburgh 412-809-0244

K & D Service Co.  
Harrisburg 717-236-9039

Electric Repair Co.  
Reading 610-376-5444

## RHODE ISLAND

Marshall Electric Co.  
Providence 401-331-1163

## SOUTH CAROLINA

Whaley Foodservice Repair  
Lexington 803-996-9900

## TENNESSEE

Camp Electric  
Memphis 901-527-7543

## TEXAS

Armstrong Repair Service  
Houston 713-666-7100

Cooking Equipment Specialist  
Mesquite 972-686-6666

Commercial Kitchen Repair Co.  
San Antonio 210-735-2811

## UTAH

La Monica's Rest. Equip. Service  
Murray 801-263-3221

## VIRGINIA

Daubers  
Norfolk 757-855-4097

Daubers  
Springfield 703-866-3600

## WASHINGTON

3Wire  
Seattle 800-207-3146

## WISCONSIN

A.S.C., Inc.  
Madison 608-246-3160

A.S.C., Inc.  
Milwaukee 414-543-6460

## CANADA

### ALBERTA

Key Food Equipment Service  
Edmonton 780-438-1690

### BRITISH COLUMBIA

Key Food Equipment Service  
Vancouver 604-433-4484

Key Food Equipment Service  
Victoria 250-920-4888

### MANITOBA

Air Rite, Inc.  
Winnipeg 204-895-2300

### NEW BRUNSWICK

EMR Services, Ltd.  
Moncton 506-855-4228

### ONTARIO

R.G. Henderson Ltd.  
Toronto 416-422-5580

Choquette - CKS, Inc.  
Ottawa 613-739-8458

### QUÉBEC

Choquette - CKS, Inc.  
Montreal 514-722-2000

Choquette - CKS, Inc.  
Québec City 418-681-3944

## UNITED KINGDOM

Marren Group  
Northants +44(0)1933 665313

### HATCO CORPORATION

P.O. Box 340500

Milwaukee, WI 53234-0500 U.S.A.

414-671-6350

partsandservice@hatcocorp.com

www.hatcocorp.com



24 Hour 7 Day Parts and Service  
Assistance available in the United States  
and Canada by calling 414-671-6350.